



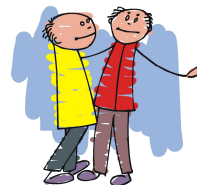
PURPOSE The purpose of the Gem, Lapidary, and Mineral Society of Montgomery County MD., Inc. is "To increase knowledge and popular interest in earth sciences, geology, mineralogy, paleontology, lapidary arts, and related subjects".

REGULAR MEETING Meetings are held the 2nd Monday of the month from September to June. The Society will meet on Monday April 14th in the dining room of the Rockville Senior Center, 1150 Carnation Drive, Rockville. The short business meeting will begin at 7:45 pm but the room is available to us at 7:30 pm so come early and see what you and others have on the Show Table and chat with old friends. The program will be a presentation by long time friend **Dr. Jeffrey Post**, Geologist, Curator-in-Charge, Mineral Collection, Smithsonian Institution, National Museum of Natural History. His presentation will be "**Tucson and Other Miscellanea.**" This sure to be interesting program is not to be missed.

THE BOARD OF DIRECTORS will meet April 21st at 7:30 pm at the abode of David and Nancy Ballard. All Board members are expected to be there. Any member is welcome to attend but please let Nancy know if you plan to attend.

WELCOME NEW MEMBERS

REGATTS, Keith & Annette, tinoikners@yahoo.com (Rockville MD)



ROSTER CHANGES

Reinstated Ex-members:

FESHBACH, Murray, 11403 Fairoak Drive, Silver Spring MD 20902-3136, 301 593 3332

ZELLERS, Charles, 415 Hermleigh Road, Silver Spring MD 20902-1605, ZellersC@HQ.NIDDK.NIH.GOV, 301 681 8885

New E Mail: SHUPE, Alf alfwork@dragonsrest.com



SUNSHINE It was wonderful to have Nancy Ballard back with us at the show. Stay healthy! Louis Van Rafelghem had minor surgery and we wish him well and full restoration of good health. Paul Vance is still recovering from a bad case of influenza as is Dave Ballard.

ARIZONA At the urging of his doctor, John moved to Arizona. Nice place for mineral collectors! After settling in, he met a neighbor who was also an older man. "Say, my doctor recommended I move here for my health. Is this really a good place to live?" "It sure is," the man replied. "When I first arrived here I couldn't say one word. I had hardly any hair on my head. I didn't have the strength to walk across a room and I had to be lifted out of bed." "That's wonderful!" said John. "How long have you been here?" "I was born here!"



DEADLINE for the May 2008 Rockhounder **April 28th**

IN THIS ISSUE

Meeting Announcements,
New Members, Roster Changes,
Sunshine, Arizona,
Rockhounder Deadline.....1
President's Message, Show Recap...2
Reg. Mtg. Minutes, Outreach.....3
Show Recap (Continued).....4
Awards.....5
Safety, Birthdays, Diamond.....6
Wildacres, Field Trips, Postal
Rates.....7
Web Sites,
Show Table, Turner Award.....8
Shows and Events.....9
Web Sites, Prizes, AFMS
Scholarship.....10
History.....11

PRESIDENT'S MESSAGE

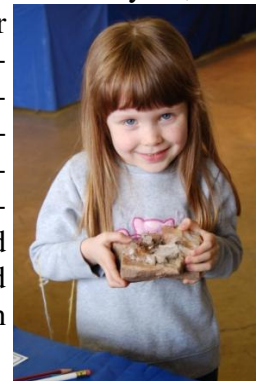
I would like to thank each of you who made our society's show a success this year. As president, it was my honor to accept many congratulations to the club for a very successful show. It was the hard work that you all provided to make the show a big success. Each of you who volunteered not only performed the jobs you did well, but also with good humor, and I believe a well-deserved sense of pride. There was an awful lot of work that went into preparing for the show as well as the effort from Friday to Sunday.

We are indebted to our show chair, Heather Felsen, who did an outstanding job and never once appeared to be flustered - a real accomplishment in itself. I know she would credit the tremendous help that she received from many of you. Seeing some of the preparation in the months leading up to the show, I was impressed with dedication that this group showed. Over the weekend, starting Friday with the great turnout we had for the setup, and continuing through to the take-down and clean-up, you volunteers worked so well together, and so selflessly to ensure people enjoyed our show. I promised myself that I would keep from trying to thank people by name in this message since I would be bound to miss someone, but I can't go without marveling at Nancy Ballard watching over the gate all weekend (including a very chilly, windy Sunday) after being in the hospital just a short time before - talk about dedication! And we would be smart to encourage the Boy Scouts to help every year - it certainly was nice to have them there this year.

I believe that our treasurer's report will show that we also had a successful show in a monetary sense. Our exhibitions, demonstrations, shop, mini-mine, fluorescent tent, and touch table were very popular with adults and kids - in fact, I had a hard time doing any shopping with my daughter since she just wanted to get back downstairs to the club's activities! I know from talking to many of the children who visited the touch table and the shop, that you all did an excellent job in fulfilling our society's purpose: to increase knowledge and popular interest in earth sciences, geology, mineralogy, paleontology (fossils), lapidary arts, and related subjects. The kids and their parents left with new knowledge and increased interest that should make us all feel that all the work was worth it.

Thanks, Mark

GEM-MINERAL-FOSSIL SHOW RECAP Of course, Heather Felsen, Show Chairman, is responsible for show oversight. She purchased a new banner for show advertising for Perry Parkway, arranged the Snack Bar coverage, handled the program pass-outs, and, no small task, she arranged for the dealers and the 2nd floor layout. This does not cover the "fire fighting" she did to resolve the minor problems on the spot. Publicity, including fliers, posters, post cards, media advertising and public service announcements, was ably handled by George Durland. Rebecca Dahlman placed show information on our Society web site. Juan Proaño and Heather Felsen managed the Venue rental. Joel Rosen oversaw the towing of the Society trailer to and from the site, unloading and reloading it, and oversaw the show electrical requirements. Wendell Mohr made up the indoor signs, demonstrator and exhibitor certificates, door prize drawing slips, took care of the drawings, and oversaw volunteer signups. Joel and Wendell arranged for door prizes. Charlie Zellers, helped by Nancy Ballard, updated the database of attendees at prior shows and Nancy and Dave Ballard made the postcard mailings to them. Elmer Lantz brought three buckets of samples of the residual Houser material for examination by dealers. Pat Repik-Byrne filled all the spaces for exhibitors, assigned them to a layout, and arranged for the distribution of certificates. Thanks to those who brought in specimens for the children, and "Touch and Feel" items. Jo Ann Mohr made up the cloth bags for children's specimens. Bob Irby oversaw the Raffle including securing entry forms, Silent Auction of Houser Lapidary Equipment, committed the rental of tables and chairs, and maintenance of the Shop lapidary equipment. He also secured our many interesting Demonstrations. New this year was a sculptor, John Jayson Sonnier who garnered attention on Sunday. Beside all the excellent demonstrations of prior shows, member Jeff Nagy joined Richard Davies (non member) demonstrating faceting gemstones. Member, George Loud was among the Micro mount demonstrators. Thanks to all of the demonstrators listed on the program. The Maryland Geological Survey provided their brochures. **Cont'd on p. 4**



REGULAR MEETING MINUTES: The March 10, 2008 meeting was called to order by President Mark Dahlman at 7:45 pm with approximately 46 people attending. Minutes of the February 11, 2008 regular meeting and the February 25, 2008 Board meeting were approved.

Junior Program Chair, Rod Towers handed out *Mini Miner Monthly* publications to all Junior members in attendance.

Show Chairperson, Heather Felsen reported she hung the banner announcing the show at the fairgrounds fence on Perry Parkway and that all the pieces of the show appear to be falling into place, including the minimum amount of pre-forms. Heather requested additional help making pre-forms if anyone was able to come to her house this week.

Mark spoke of the additional publicity, the expected turnout (high), and the need for more volunteers.

George Durland announced that a show ad was being published in the Washington Post weekend section on Friday the 14th as well as the Washington Post Express publication that is handed out free to Metro riders. He also mentioned a flea market being held at the same time as our show and a St. Patrick's day parade that will terminate at the fairgrounds during the course of our show.

Pat Repik-Byrne announced that we are at full capacity for the exhibits.

Bob Irby requested some help in obtaining the raffle specimens from the dealers.

Wendell reminded us to submit questions AND answers for the junior quiz.

Joel Rosen requested that the Friday set-up volunteers report for duty by 9:00 am.

Vice President, Elmer Lantz introduced the speaker for the evening, John Hornstein, a Naval Research Laboratory physicist. John explained the various "mechanics" and functions of ozone, touched on its chemistry and discussed the measuring techniques and instruments used to monitor this all-important component to the existence of life on Earth. John discussed the ozone hole with great depth and the potential for global warming to actually reduce the size of the hole. It was a fascinating presentation and to quote our club President, he "had us all thinking on a higher plane than we normally do."



Editor, Wendell Mohr gave a "Thank you and Congratulations" to Pat for one of the most successful exhibit "round ups" in the club's history and echoed Mark and Heather's pleas for additional show volunteers. Wendell also gave the club a very positive and encouraging update on Nancy Ballard. Wendell mentioned the April 27th Rockville Science Day organizers have requested an exhibit & talk from us. Anyone who is able and willing, please contact Wendell or George Durland.

Guests, Robert Clemenzi, Donald Greaves, and Keith Regatts attended. Keith Regatts was unanimously elected to membership.

Treasurer, Juan Proano announced we continue to be financially sound, have received full payment from the dealers participating in the show, and that the bulk of our show obligations have been paid.

SPECIAL AWARD Mark Dahlman announced that George Durland was named the "Rockhound of the Year" by the Eastern Federation Mineralogical Society for his tireless efforts in supporting our club and his continued community service in the field. Congratulations George and our heartfelt thanks for all your enormous contributions.

Holly McNeil, Secretary

BOARD MEETING MINUTES: No Board meeting was held in March.

OUTREACH George Durland recently served as an earth science judge at a science fair at Poolesville Middle School in Poolesville.



GEM-MINERAL-FOSSIL SHOW RECAP Cont'd from P. 2.

The set up on Friday went quickly owing to the many helpers: Jeff Cessna, Robert Clemenzi (non-member), Mark Dahlman, Eric Durland, George Durland, Heather Felsen, Bob Irby, Pat Jayne, Eric Kindahl, Elmer Lantz, Chuck Mason, Audrey, Rory, and Aidan McElravy, Holly McNeal, Jim Michaelis, Jo Ann Mohr, Wendell Mohr, Tim Morgan, Andy Muir, Owen Powers, Juan Proaño, Pat Repik-Byrne, Joel Rosen, Rod Towers, and Harold Williams.

Selling Tickets were Nancy Ballard (great to have you back!), Mark Dahlman, Chuck Hyland, Pat Jayne, Holly McNeal, Steve McNeal, Tim Morgan, Juan Proaño, and George Reimherr. Warm greetings were given out at the Hospitality Table by Jack Busch, Andy Celmer, Jo Ann Mohr, Wendell Mohr, Keith Regatts, Tom Parnell, Fred Parker, Owen Powers, Alf Shupe, Carol Smith, and Michael Tihomirov.

I am told by Shop Chairman Don Turner that the shop helped guests produce 272 cabochon stones and had many helpers including Chris Barr, Al Bullock (ex-member), Leila Campbell, Larry Campbell, Jeff Cessna, Patricia Cronin, Chuck Hyland, Mark Dahlman, Hunter Graham (Boy Scout volunteer), Jonathan Harris, Matt Hyland (Boy Scout club member), Bob Irby, Elmer Lantz, Charles Mason, Alex McDonald (Boy Scout volunteer), Tom Parnell, Owen Powers, Les Schaub, Nancy Shinowara, Dave Smith, Don Turner, and Bob Winfield. We are indebted to Jeff Cessna, Heather Felsen, Marco Marchegiani (non-member friend of Heather), and Paul Vance (unable to get to show due to illness) for making up the pre-forms used in the shop.

Working at the Mini Mine and at the "Touch Table" and giving out free specimens to youths were Ken Carter, Mark Dahlman, George Durland, Jonathan Ertman, Cynthia Hunter-Shupe, Chuck Hyland, Matt Hyland, Rory McElravy, David Maclean, Holly McNeal, Jim Michaelis, Andy Muir, Jeff Nagy, Keith Regatts, Rob Robinson, Alf Shupe, and Robert Wright. Michelle Michaelis, ill at show time, made up the Jr. Quiz and monitored mini mine supplies.

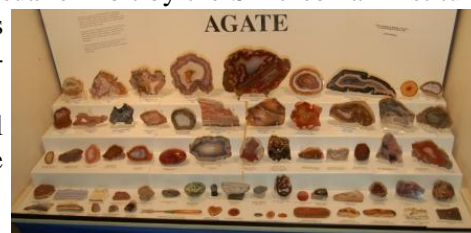
At the Raffle table, which netted about \$416, were Mary Crosswhite, Holly McNeal, Tim Morgan, Keith Regatts, John Wells, and Harold Williams. Specimens were solicited by Nancy Shinowara and donated by all but one of our good dealers, plus a fine donation by Hugh Richards of two Petrified Woods in fancy plastic cases and a new DK Rocks & Minerals book, and three residual flats of specimens from the donation of Stephanie Sidella.

The fluorescent displays were particularly colorful this year and made a very showy presentation. Mark Dahlman, Eric and George Durland, Jonathan Harris, Andy Muir, and Rodnie Towers contributed exhibits and gave educational talks. Thanks to those who contributed to the Meteorite exhibit coordinated by George Durland. I know that at least Dave and Nancy Ballard, Keith Regatts, and Joel Rosen added to George's specimens.

To take down Sunday evening, Chris Barr, Jeff Cessna, Robert Clemenzi (non-member), Eric Durland, George Durland, Chuck Hyland, Bob Irby, Pat Jayne, Eric Kindahl, Marco Marchegiani (non-member friend of Heather), Chuck Mason, Audrey, Rory and Aiden McElravy, Wendell Mohr, Jo Ann Mohr, Tim Morgan, Tom Parnell, Juan Proaño, Joel Rosen, Alf Shupe, Dave Smith, Harold Williams, and Robert Winfield did the hard part.

We missed Georgia Olmstead and her two exhibits (due to Fred's hospitalization.) The program did not list the exhibit of Semi - Precious Stones that Alf Shupe displayed in the open case. The unusual exhibit by the Smithsonian Institution, National Museum of Natural History, featuring Indonesian agate patterns showing letters, animals, and symbols was inadvertently omitted from the program

It was nice to see members Fritz Beckman and Anna Marcus, both in wheel chairs, but in great spirits, and also charter member, Dan Spielman who came from Easton MD.



Lastly, thanks to our Dealers who reported good sales. Six of the twenty two were new this year.

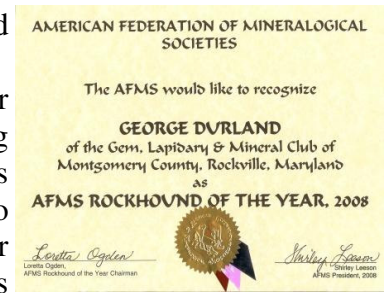
IT WAS A GREAT SHOW! Congrats to Heather Felsen on her successful first year as Show Chairman.

Apologies to volunteers if we have overlooked your name, you shifted from job listed to another, or are listed and did not serve in that capacity. Let the Editor know and we will acknowledge corrections in the next newsletter.

See you next time. Save March 20-21-22, 2009!

ROCKHOUND OF THE YEAR **GEORGE DURLAND** was selected by the Board as our Rockhound of the Year. Congratulations, George!

“George has served as Vice-President and President and is currently on our Board of Directors as Immediate past-president. He was responsible for doing the paper work and leg work so our Society could obtain 501(c)(3) status. He is now serving as publicity chair for our annual show and is a major contributor to the Fluorescent exhibit as well as entering several other cases for exhibit at our shows. He has given talks at our meetings and at those of other area clubs as well as to schools in the area. Currently he also helps judge and choose recipients of our society's awards for Earth Science exhibits at the Montgomery Area Science Fair for junior and senior high school students. He has been called upon to do many jobs in the Society and we are grateful that he always accepts the call!”



Submitted by Nancy & Dave Ballard For the Board Nov 24, 2007

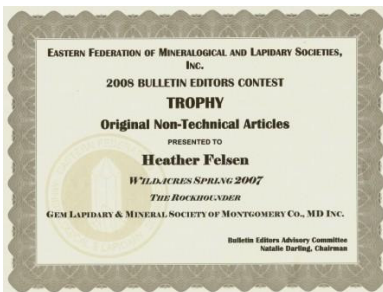
EACH ONE TEACH ONE AWARD the winners of the Each One Teach One Awards were announced during the 2008 EFMLS Convention banquet held in February in Jackson, MS. Third Place was won by **WENDELL MOHR**.

“Education is the goal of our Society and Wendell is the leading exponent of this goal. He has given talks to schools, Boy and Girl Scouts, senior centers, libraries, day care groups, and camps. He supplements his talks on rocks, minerals, and fossils with free specimens for children and passes out educational material to all. He encourages young people to choose Earth Science as a career and guides them when they so choose. For several years he helped judge and choose recipients of our society's awards for Earth Science exhibits at the area Science Fairs for junior and senior high school students. He has organized a series of talks given by Society members and others at senior centers and adult care groups. As editor of *The Rockhoulder* (our newsletter) he includes educational articles as well as articles dealing with educational opportunities at museum events, lectures, seminars, exhibitions, workshops and classes. Since 1999 he has written monthly articles on web-sites providing members and other readers the opportunity to explore the internet for information and entertainment (these articles are often entertaining themselves). He has given several slide shows to our society and to other clubs in the area. He has provided the Society's program chairmen with many productive contacts for speakers who deliver educational talks to our members. He responds to E-mail requests for information on mineral and fossil collecting in our area and provides locality information as well as book and magazine references. For all these reasons we think Wendell is highly qualified to be considered for the Each One Teach One award.”

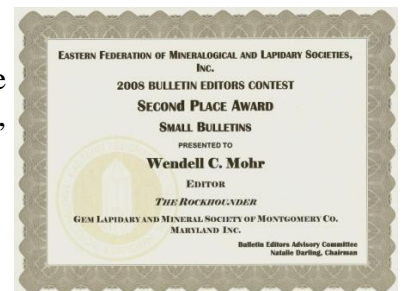
Submitted by Nancy & Dave Ballard For the Board Nov 23, 2007

2008 EASTERN FEDERATION BULLETIN EDITOR’S CONTEST

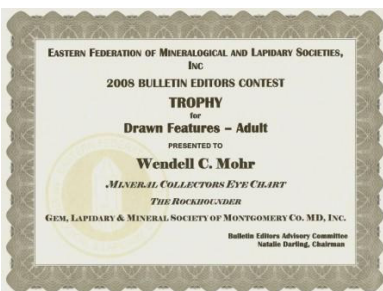
➤ **HEATHER FELSEN’S** wonderful article on “Wildacres Spring 2007” was awarded a TROPHY, the very best in the “Original Non - Technical Article” category. This is the highest possible award, not bad for a first submission!



WENDELL MOHR, Editor, was awarded the Second Place Award for our society’s bulletin, *The Rockhoulder*, in the “Small Bulletin” category.



➤ **WENDELL** was awarded a TROPHY for best in the category “Drawn Features - Adult” for his “Mineral Collector’s Eye Chart.”



He also received two honorable mention awards for two web site articles.

SAFETY FIRST AND LAST!!

by Jim Doran, EFMLS Safety Chair



This month I want to test your **powers of observation**. I want to see if you really are aware of the sometimes not so-obvious regarding safety and collecting.

There is a very popular TV show on the Travel Channel titled: “The Best Places to Find Cash and Treasures.” The premise of the show is to send the host to different areas around the country to try to find valuable minerals, gemstones, fossils, and other items to see how much the items are worth.

Recently, I watched a show where the host ended up hunting for emeralds at the North American Emerald Mine, in Hiddenite, North Carolina. She was brought into the diggings of the mine by the owner, the now famous, Jamie Hill. He showed her how to break open an emerald pocket by using a rock pick, and he was not wearing safety glasses! How many of you noticed that?

In a second show I watched, the host went to Herkimer, New York, to try to find Herkimer Diamonds. At the first location, she was wearing her hard hat and safety glasses. She then went to a second location to try her luck, and was shown trying to break a rock without safety glasses! How many of you noticed that?

My point in bringing up these incidents is to make you try to be more aware, more observant on collecting trips. Do you have all your required safety equipment? Do the other club members have theirs? Most importantly, is the equipment used, and used correctly?

Next month I want to give you some more examples of observations regarding safety in part 2 of this article. (I welcome any and all comments, suggestions, ideas, from any club or club member. Feel free to contact me: Jim Doran, at my email address: <jpdoran@comcast.net>.

**APRIL MEMBER BIRTHDAYS**

Elsie Durland, Karen Durland, Quinn Hunter, Sierra Hunter, Anna Marcus, Michele McMurtry, Michael Tihomirov, Virginia Vance, Charles Zellers. Your birthstone is Diamond.

There are many variations of birthstones dating back to early civilizations. Over thousands of years, with the passing of time and fashions, different gemstones have been assigned to different months. During the eighteenth century, the relationship between birthstones and their assigned months received a wave of popularity, and many different lists came into being. In 1937, the (British) National Association of Goldsmiths (N.A.G.) organized a uniform “official” list which seems to have more or less become internationally recognized. The modern birthstone list is the official list from the American National Association of Jewelers, Jewelers of America. These gemstones were officially adopted in 1912 (tanzanite was added in October 2002). In the US, this is the accepted list.

For thousands of years, man has used colored stones as amulets and talismans. In the past and present, people used gemstones to predict the future, to protect them from harm, and as healing aids. From early times religious traditions included gemstones as important elements in their ceremonies and practices. Many people believe that the planets influence different stones and that planetary birthstones transmit powers associated with those planets. It is thought that originally color was the major attribute that determined a person’s birthstone. Gemstones associated with the zodiac signs sometimes coincide with the birthstones by month.

April: Diamond With a hardness of 10 and the brightest luster of all transparent gemstones, diamonds have a unique place in the gem marketplace. Diamonds occur in colorless and near colorless forms as well as rare fancy colors. Both color enhanced and synthetic diamonds are available as well as many diamond simulants—chief among them being cubic zirconia. Major sources include South Africa, Canada, and Australia. by Mark Villanueva G.G., C.S.P., A.J.P. Member of the Houston Gem & Mineral Society. Contact me at <Gemologist@hgms.org >. From Backbender’s Gazette, 12/07 via Rochester Lapidary Society – 12/07

by Steve Weinberger

It's not too late for you to send in your application for the September 8 - 14 session of EFMLS Wildacres. As members who have attended a session in the past can attest, each Wildacres session is unique, fun and educational.

Consider:

A week away from the pressures of "life" - no traffic, blaring radios, rude people, blathering TV, or politics.

A week surrounded by the peace of the mountains with a spectacular view of Mt. Mitchell from your room, porch or patio.

Exposure to classes where you can learn new skills or reinforce old ones.

The opportunity to meet new people with similar interests to your own.

And perhaps the most intriguing reason for attending is the scheduled Speaker in Residence for the week - Denise Nelson. Denise is a Washington DC area gemologist and jewelry aficionado and an excellent speaker. She and husband Dennis recently spent several weeks in South Africa where, among other things, they were The guests of the DeBeers group. Consider giving yourself an inexpensive (\$330 for the entire week plus a modest materials fee depending on the class or classes you take) and fun vacation this September. Applications can be obtained at the GLMSMC meeting or via the website <www.amfed.org/efmls/wildacres.htm>. A complete list of the classes being offered and a description of the facility are also there.

Modified slightly from Chipper's Chatter March 2008



FIELD TRIPS: Jonathan Harris, Field Trip Chair says That Fred Parker has arranged two dates for the **Rockville Crushed Stone (Hunting Hill) Quarry**, Rockville Maryland. Hunting Hill is an old favorite.

Sunday April 13 and Sunday May 18, 8:45 AM - 3 PM both days

Find your best way to the intersection of Shady Grove Road with Darnestown Road.

(From I-270 you may take I-370 west to Great Seneca Highway, where you turn left, to Darnestown Road, where you turn right.) Go North (West at this point) on Darnestown Road. Turn Left at the stop light at Travilah Road. Go 0.9 miles and turn left on Piney Meetinghouse Road. Go 0.1 miles to the quarry entrance on the right. Enter the property and stay right and meet at the office building.

You may only go to this site with an organized Club trip. It has been customary to pay \$5.00 each for the person (Currently Jeff Greene) opening the quarry for us. Safety Requirements: STEEL-TOED BOOTS, HARD HATS, SAFETY GLASSES/GOGGLES, SIGNED RELEASE FORM.

Sunday April 27, PCS Lee Creek phosphate mine, Aurora, NC. This is a classic fossil collecting site for shark's teeth and whale bones. We have only 5 slots. Furthermore, you are only allowed into the mine once a season; please don't go with our club and then with another; If you get caught you may get barred. Please signup no later than April 13 with Jennifer at <xtlresearch@yahoo.com>. In an email please include both email and phone contact information and how many times and when you have been to the site. If you don't have access to email, please call Jonathan at 301-545-0808. We would like to have one experienced person on the trip. Jennifer or I will notify you soon after if we have a slot for you. Note that "no-shows" for this trip are absolutely forbidden. The mine management has reduced us from 8 slots to 5 because of emergency cancellations of previous people from our club; and these were cancellations we informed them about ahead of time. Also mine management is extremely strict and has no tolerance for even the slightest infraction of rules. End up on the wrong side of a collecting zone marker cone and our club will get zero slots next time. See <<http://www.fossilguy.com>> to see what to expect. This is a reminder that quarry management does us great favors by inviting us in and we must be extra sensitive to their rules and requirements.



POSTAGE RATES Again rise May 12th. If E Mail only will suffice for your needs, let the Editor know. It will save nearly a dollar to not send a printed mail copy. Think Green!

SHOW TABLE

Exhibitor

Ken Carter
Jeff Cessna

March 10, 2008 Thanks to those who bring items for sharing at the meetings

Specimen (s) * = Self-collected or self made **Locality**

Belemnites, Exogyra Oysters*

Phlogopite, Calcite, Humite, Diopside

Reedy Point C&D Canal DE

Long Lake Zn mine near Parham, Ontario, Canada

Hardystoneite, Willemite, Calcite, Clinohedrite Franklin NJ

George Durland

Manganaxinite, Willemite, Clinohedrite,

Xonotlite, Thompsonite

Rhodonite in Calcite

Franklin NJ

Franklin NJ

Gerald Elgert

Willemite

Franklin NJ

Don Greaves

Trilobite Selenopeltis

Erfoud Morocco

(Visitor)

Crinoids

Merzouga Morocco

Mosasaur Teeth

Khourgibda Morocco

Petrified Casuarina

Western Australia

Lapis

Pakistan

Mammoth tooth ivory

St. Lawrence Island

Peanut Wood

Western Australia

Nephrite

British Columbia

Belemnite

Near Moscow Russia

Brachiopods

Western Australia

Camel Tooth

Salina Co. KS

Chuck Hyland

Agatized Amethyst*

Rt. 7 Road Cut Leesburg VA

Bob Irby

Amethysts

Uruguay, Africa, Siberia, Brazil, Russia

Alexandra Kindahl

Malachite*

Mineral Hill Liberty Reservoir MD

Eric Kindahl

Unakite*

Rose River VA

David MacLean

Rocks*

S. Shore Lake Superior, U.P. MI

Chuck Mason

Agate Cabochons*

Big Horn River, Yellowstone Co. MT

Aiden McElravy

Fluorite

Locality not given

Rory McElravy

Unknown Identified as Manganese Oxide Dendrites

Wendell Mohr

Tucson Gem and Mineral Show Poster

Andy Muir

Willemite

Franklin NJ

Sodalite & Lazurite

Afghanistan

Halite

South Australia

Tom Parnell

Actinolite*

Chester VT

Tremolite*

Canaan CT

George Reimherr

Fluorapophyllite*

Luck Quarry, Leesburg Plant, Ashburn VA

Joel Rosen

Calcite on Sphalerite

Turt Mine, Oasului Mtns. Maramures Romania

Calcite

Peregrina Mine, Guanajuato, Mexico

Rod Towers

Microscope and Several Specimens



LILLIAN TURNER AWARD

Our judges deemed the exhibit of Aidan McElravy at our show to be the winner of the Turner award for 2008. Aidan's Exhibit titled "Got Rocks: What Now?" was selected because it had a colorful backdrop that drew the eye to the case, showed a variety of rock applications, and general creativity of the case. Aidan will receive a \$100 U.S. savings bond. Good job, Aidan!



Q. What did one lodestone say to another lodestone?

A. I find you very attractive.

Q. I have five letters. If you take the first and last, I will still be the same. Even if you take the middle letter, I will be the same as before. What kind of geode am I?

A. Empty.

UPCOMING SHOWS AND EVENTS

April 10-13, 35th Rochester Mineralogical Symposium, Radisson Hotel Rochester Airport, 175 Jefferson Road, Rochester NY, \$60 Thursday night through Sunday Noon. \$65 registration. \$30 per day at the door. Phone 315 682 0387, or E Mail contactrms@hotmail.com.

April 19, Prehistoric Party at Clearwater Nature Center, 11000 Thrift Rd., Clinton MD, 1:00 to 4:00 pm for Ages 3 & up, Fee \$3, reservations not required. MD Dinosaurs and other prehistoric creatures, See fossil and dig your own. Crafts, puppet show.

April 26-27, Washington Bead Society 47th Semi-Annual Bead Bazaar, Activity Center, Bohrer Park, 506 S. Frederick Avenue, Gaithersburg MD Admission \$7.00, Children under 12 free. Sat. 10 am-5 pm, Sun 11 am-5 pm.



April 26-27, 36th Annual New Jersey Earth Science Association Gem & Mineral Show with Outdoor Swap & Sell. Sat. 9-5:30, Sun 10-5. Franklin School/Washington Avenue off Buckwheat Road by way of Franklin Ave., Franklin NJ. Donation \$5.00/person, under 14 free with paying adult. Info.: 973-209 7212.

April 26, Saturday only, 10 am-4 pm. Open House at the University of MD, a humongous event, over 77,000 attended last year. Information David Ottalini, 301 405 4076 or <<http://www.marylandday.umd.edu/>>. 2118 Geology Building will be open.

May 3, Saturday, Earth Day open house at Travilah (Rockville) Quarry, 10:00 am to 3:00 pm., Free. Kid's activities. See <<http://www.quarryearthday.com/>> for information or call Debbie at 301-294-6404. This is NOT a collecting trip!

May 24, Saturday only, 10 am-4 pm. 19th Annual Chesapeake Gem & Mineral Show, FREE admission, NOTE: (Formerly at Goucher College) Now new location at Ruhl Armory Towson MD. I-695 exit 26, York Road South. Armory is on the East side of York Road (Across from car dealer and funeral home) just inside I-695.

Grab the brochure of the Montgomery Co. Recreation Dept./ Montgomery Parks MNCPPC at a library or check online. Read about:

Stone Carving for Beginners, Children 9-13. 8 sessions starting April 11th, Fridays at 4:00 to 5:30 pm at the Create Arts Center. Fee \$93 + \$20 material fee.

Jewelry Basics, Ages 12 & up, 1 session at Damascus Community Recreation Center, Saturday April 12th, 10:30 am to 1:30 pm. Fee \$30 + \$14 material fee.

Beginning Wire Works, Ages 12 & up, 1 session at Damascus Community Recreation Center, Saturday April 26th 10:30 am to 1:30 pm. Fee \$35 + \$8 material fee.

Earrings, Earrings, Earrings, Ages 12 & up, 1 session Wednesday April 16th at Bauer Drive Community Center 7:00 to 9:00 pm and another 1 session at Damascus Community Recreation Center Saturday May 3rd, 10:30 am to 12:30 pm. Fee \$30 + \$10 material fee.

Rings on Your Fingers, Ages 13 & up, 1 session Wednesday April 23rd, Bauer Drive Community Center, 7:00 to 9:00 pm. Fee \$30 + \$12 material fee.

Wire Bracelet with Gemstones, Ages 13 & up, 1 session Wednesday April 30th, Bauer Drive Community Center, 6:30 to 9:30 pm. Fee \$35 + \$8 material fee.

The Geology of Black Hill and Hoyle's Mill, Ages 18 & up, 1 session Saturday April 12th, 10:00 am to 3:00 pm, Black Hill Visitor Center. Fee \$20 (\$18 for Friends of Black Hill.)



The Spring-Summer Classes and Events brochure from Glen Echo Park features:

Basic Wire Working, Age 16 & up, 1 workshop Saturday, May 3rd, 1:00 to 5:00 pm Arcade 202. Fee \$45 + \$3 kit fee. Bring tools or purchase for \$20.

Crystal Pearl Wire Rings, 16 & up, 1 workshop Sat. June 7th, 1:00 to 4:00 pm Arcade 201. Basic Wire Working recommended as prerequisite. Fee \$35 + \$20 Mandrel and kit fee. Bring tools or purchase for \$14.

Introduction to Metal Clay Jewelry, Age 16 & up, 2 workshops, either Sat. & Sun. May 3rd & 4th or Sat. & Sun. Aug. 9th & 10th, 10:00 am-4:00 pm, Arcade 304. Fee \$160 + \$80 supply fee.



Collectors At Work



By Wendell Mohr

•WEB SITES

Faceters Companion CD v2.002 of the Old Pueblo Lapidary Club, Tucson AZ is available to browse on line or as a freeware download at <http://www.rockhounds.com/oplc/>. Faceters and others will find a wealth of cutting designs, multiple faceting and mineralogy articles, properties of commonly faceted minerals and materials, a listing of guilds, clubs, and schools, a listing of books on faceting, and links to online resources. Here is a good site for exploring on those days with April showers. • The faceter came to his club meeting with a huge bandage over his nose. “Keep your nose to the grindstone” isn’t always good advice for the lapidary. •

It’s ALL MINE!, <http://library.thinkquest.org/05aug/00461/>, is **for kids** in the 4th to 7th grades and by six



kids of that age, and is an educational resource for all ages in my opinion. Major topics are Mining (including surface and underground, and machinery), Minerals, Rocks, Gemstones, Environment (and reclamation), Mining words, and Mining fun (with coloring pages, puzzles, games and quizzes.) Garnering an “A” rating in my opinion, it is comprehensive, and exciting, including some videos. • Visiting an old mining town’s cemetery, he read the tombstone: William James Morgan, Born April 1, 1854, Died April 1, 1883, “Looked up the mine shaft to see if the man car was on the way down. It was.” •

Disaster Pages of Dr. George Pararas-Carayannis, <http://www.drgeorgepc.com/>, is an award winning site and “provides a wealth of educational and scientific information regarding recent and historical, global and regional destructive tsunamis, devastating earthquake disasters, deadly volcanic eruptions (like Krakatoa), and killer hurricanes and hurricane surges.” The Dr. holds numerous credentials. He covers more ground than I can describe here, take a look for yourself. • Wont be any Mt. Ranier eruptions with attendant Pyroclastic flow, Major earthquakes, or tsunamis in the Seattle WA area. The geologist of the area went to the judge and he issued a restraining order. •



FEBRUARY PRIZES: (Overlooked last month) Audrey McElravy claimed a beautiful chambered nautilus sliced and polished fossil as general door prize while Rory McElravy took home the junior prize, a vesuvianite from the Jeffrey Mine, Asbestos, Quebec, Canada. How ‘bout that? Is there a pattern going on here? The only non-McElravy prize was the show table prize, a beautiful microcline var. amazonite from Konso, Southern Nations Regional State, Ethiopia won by Elmer Lantz.

MARCH PRIZES Aidan McElravy was thrilled with a junior prize rhodochrosite from Huanua, Peru. Tom Parnell took home a show table prize prehnite w/quartz from Jebel Melli, Atlas Mountains., Morocco. And Frances Gallegos won a prehnite w/ epidote from Vryes Region Mali as the general door prize.

AFMS SCHOLARSHIP FOUNDATION NEWS



by Dee Holland, President

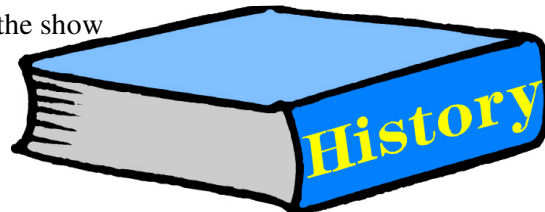
Prof. Emeritus Arthur M. Hussey, Bowdoinham, ME was selected to be the EFMLS regional honoree. Dr. Hussey born in Pittsburgh PA received his Ph.D. from the Univ. of IL, Champaign-Urbana, and spent 34 years as Chair of Geology at Bowdoin College in Brunswick ME. Although retired, he remains Volunteer Coordinator of the Cleveland Cabinet mineral collection and the rock & fossil collections at Bowdoin. A prolific author, Professor Hussey has authored or co-authored numerous articles on the metamorphic stratigraphy, structure, intrusive activity and tectonic interpretation of the bedrock geology of southwestern Maine. He has also done extensive work in co-compiling the 1957 and 1985 editions of the bedrock geology maps of Maine. Presently, he is co-authoring yet another paper on Maine’s geologic history.

Prof. Hussey will have the honor to select two post graduate students who will receive the monetary scholarships.

Abstracted from the Apr. 2008 AFMS & EFMLS Newsletters



SOCIETY HISTORY: 1992 SHOW AND MORE. OK, so was the show a success? Of course it was; I can't recall one that wasn't. The only cloud that came was the one which had descended on the Show Chair, Steph Hald, who had come down with flu accompanied by an asthma attack. She had prepared the crew so well that everything went smoothly despite Steph's forced early departure.



As for some details about the show Cheryl and Gordon Austin's mineral case was judged best in that class, Steph won best in class for her fossil display (That helped her feel better), Wendell Mohr's quarry model was best in class for educational exhibits, and the Washington Shell Club was given a special award for its several cases of sea shells. (Note: I miss their colorful exhibits, but alas, the organization is no more.) There was a good turnout of members to help put the show across. I did notice from the Dealer's List that not a one of them was at this year's event. I know that tempus fugit but not that dealers do also.

In the March *Rockhounder* Editor Nancy Ballard announced that member Jennie Smith had authored a book "*Guide to Crystallography*" in which she explained the subject in a concise, logical, and direct manner in, as far as possible, layman's language.

And Guess what, at April's meeting Jennie gave a program on Crystallography. Using slides to illustrate, she described the different systems and the various forms minerals can take. And as often happened in the past, the evening's speaker won one of the door prizes.

As he had done in previous years, Wendell Mohr judged Earth Science entries in the annual Montgomery Area Science Fair, and announced the winners at the April meeting. Before doing so, he commented that the quality of the projects was better than in previous years. He selected the following winners of the Society's awards: Senior winner: Ajay G Shroff, a 15 yr. old 10th grader at Thomas Wooten HS, whose project was "Chemical Fixation for Pollution Control." According to the Washington Post, Ajay also won first place in the Earth and Space Sciences category. (Wendell knows how to pick 'em.)

Junior winners: Elizabeth A. De Terrisi. A 13 yr. old 8th grader at St. Andrew Apostle School, who titled her project "See as Snowflake." (Yes, snow flakes are considered to be crystals of ice, a recognized mineral); and Gustavo E. Araoz, a 7th grader at Bartholomew School, whose project was entitled "Paleogeography: Fossils and Landscape." Per custom, each winner was given a cash award and a year's membership, along with their parents, in the Society.

Also voted in as new members that night were Georgia and Fred Olmstead. For those of you who didn't know, Georgia is the bulletin editor for several clubs in the Washington area.

On the evening's Show Table Mike Ellwood displayed a fossil fish he had acquired at March's show. So what's a big deal about a fish? Well, it seems that its back was broken open (Mike didn't say how it happened) and a geode was revealed in the fish! Don't ask me any more, I'm just quoting what was in the *Rockhounder*.

Moving on to May's meeting, early in the evening's proceedings, Anna Marcus was voted in as a Life Member. Anna had been a member since the Society's early days. In addition to serving two tours of duty as Secretary, Anna for many years had been in charge of publicity for our shows, in addition to being a regular fossil exhibitor in them. Along with husband Phil and daughter Sue, she set up exhibits of fossils and minerals in various county libraries and nature centers, and was generous in sharing specimens with school kids and others. (It was good to see her again at our recent show.)

The evening's program was presented by one of our collegiate scholarship winners, Cheryl Petrina, who had just received a Master's degree and was continuing her studies toward PhD. Her topic for the evening was the Rio Grande Rift, which extends from Socorro NM to Salida CO. Ms. Petrina used Landsat images in her studies and went to the area to find the physical evidence she needed to complete her research. She stated that the pre-rift rocks in the valley are pre-Cambrian, and the more recent ones indicate the latest "action" to have taken place about 5000 years ago. Thus, the rift is considered to be an active one. Ms. Petrina was enthusiastic about her subject and presented it very well.

Gladys Fuller reported that during the school year 1991-2 she had visited three elementary schools where she conducted two 50 minute sessions of her "Reading the Rocks" program. At the 4th grade school she prepared two special 45 minute programs designed for 1st graders. She used a very elementary reference book, a beautiful picture book, and more advanced reference book to show how books can help one learn about fossils and minerals but also how reading can help in advancement. She tried to weave into her talk scientific words such as "transparent, translucent, and opaque." She showed the kids various forms of quartz plus petrified wood and a dinosaur bone, and even a partly polished piece of coprolite as they file out of the room at the end of the 2nd session. Gladys said one little girl, after leaving the room, turned around came back, and hugged her around the knees. What better accolade could one receive? On that happy note I'll sign off. More about 1992 next time. By Jack Busch

BOARD OF DIRECTORS

President- Mark Dahlman, 11906 Scovell Terrace, Germantown MD 20874-2532	301 428 0455
Vice President- Elmer Lantz, 10128 Hereford Place, Silver Spring MD 20901-2035	301 593 0369
Secretary- Holly McNeil, 22 South Duke Street, Rockville MD 20850-1014	301 605 7179
Treasurer- Juan Proaño, 8624 Bunnell Drive, Potomac MD 20854-3545	301 299 2034
Junior Advisor- Rod Towers, 19609 Gunners Branch. Rd., Germantown MD 20876-2738	301 972 1264
Field Trip Chairman- Jonathan Harris, 11932 Goya Drive, Potomac MD 20854-3313	301 545 0808
Membership Chairperson- Nancy Ballard, 16812 Baederwood Lane, Derwood MD 20855-2011	301 926 7374
Show Chairperson- Heather Felsen, 14601 Berryville Road, Darnestown MD 20874-3507	301 802 5608
Property Manager- Joel Rosen, 833 Rampart Way, Union Bridge MD 21791-9325	410 775 7937
Past President- George Durland, 8600 Bunnell Drive, Potomac MD 20854-3545	301 299 8213
EFMLS Liaison- Wendell Mohr, 9509 Emory Grove Road, Gaithersburg MD 20877-3501	301 926 7190
Bulletin Editor- Wendell Mohr, 9509 Emory Grove Road, Gaithersburg MD 20877-3501	301 926 7190

Charter Member: Dan Spielman; Life Members: David Ballard, Nancy Ballard, Jack Busch, Larry Harrison, Anna Marcus, Wendell Mohr, Charlotte Morrison, Dan Spielman, and Paul Vance

Society Address: Gem, Lapidary, and Mineral Society of Montgomery County MD., Inc.
P. O. Box 444, Gaithersburg MD 20884-0444

All Society correspondence is to be sent to this address except that which is intended for the Rockhounder and its editor. Such items are to be sent to the editor's home address.



Permission to copy material printed herein, except specifically copyrighted items, is granted, provided credit is given.



1st Place, New Editor, 2007
2nd Place, Small Bulletin, 2008
EFMLS Editor's Contest



FIRST CLASS MAIL
DATED MATERIAL
TIME SENSITIVE



THE ROCKHOUNDER
Gem, Lapidary, and Mineral Society
Of Montgomery County, Md., Inc.
Wendell C. Mohr, Editor
9509 Emory Grove Road
Gaithersburg MD 20877-3501

