



The purpose of the Gem, Lapidary, and Mineral Society of Montgomery County MD, Inc. is “to increase knowledge and popular interest in earth sciences, geology, mineralogy, paleontology, lapidary arts, and related subjects.”

REGULAR MEETINGS

Next Meeting:

Monday April 13, 2015 @ 7:30 PM
David Tiktinsky, Vice President

March Speaker Information:

Chuck Hyland, Club member
Boone and Sons

Title of talk: Why Some Gemstones Have Color Shifts (Particularly Sapphire and Garnet from Tanzania)

Chuck Hyland’s Biography

Chuck is a fellow club member who went to college for geology at UVA. He started his career as a coal mine engineer. After an unfortunate accident at the mine where he was working, he decided that he wanted to have his career move in a different direction. He engaged in a variety of careers, including working the restaurant business and supporting the military.

In the 80's he refocused his work on gemology and worked at the Gemology Institute of America doing grading and research about inclusions in gemstones. This work lead him into retail and he has worked for Boone and Sons for over 27 years. He provides insurance claims and has written guidance to insurance industry processors to help them understand the reports they are reading. He has also written various articles on jewelry and stones.

"Every rock tells a story" is Chuck’s motto.

In This Issue

Regular Meetings, March Speaker, Speaker Bio.....1
Board of Directors Meeting, President’s Message.....2
GLMSMC Regular Meeting Minutes.....3-4
GLMSMC Show Table.....4-5
Show Table Pictures.....6
Board Meeting Minutes, Follow Up on Email Issue, Volunteer Wanted....7
Future Rockhounters of America Meetings.....8
Junior Exhibits at March Show.....9-10
Field Trip Report.....11
Field Trips.....12-13
Websites of Interest.....13-14
Events of Interest.....14-15
Board of Directors Info.....16

BOARD OF DIRECTORS MEETING

The Board of Directors will meet 7:30 PM on **Monday April 20, 2015** at the home of Andy Muir. Board members are expected to be there. Any member is welcome to attend, but please let Andy know if you plan to attend at amuir21@comcast.net or phone 301-990-1370.

PRESIDENT'S MESSAGE: "KID AT CHRISTMAS"

Chris Luzier

Well our 51st annual show has come and gone, and is another one for the books! The show was well attended with many great displays and went quite smoothly with all of our club members' volunteer support provided. We still had a few last minute holes to fill in for the Lapidary shop and a couple of other places here and there. What we didn't anticipate though was the amount of walk-in volunteers we had that just showed up to work! This most especially occurred with the Lapidary shop with people we had trained to cut cabs at shows in years past. They just came in to cut cabs again and teach the children. As I watched these great volunteers help, I could almost hear Louis Armstrong singing "What a Wonderful World" as if he agreed that this time was indeed wonderful. I cannot say enough to all of our volunteers, thank you so much again!

Another exciting and wonderful trend that has been happening with the GLMSMC is a steady influx of new and very motivated members. They were a huge help at the show with volunteer support and set-up and breakdown of the show as well. One of our newest members (who has been with us for one month), came up to me at the show after he had walked around enjoying everything for a few hours. He was just blown away by all of the different demonstrations, exhibit cases, dealers and masses of people, all there to enjoy the same thing! He told me he had no idea that the show was going to be like that and was just having a blast. This is the essential element that I have always loved about this hobby. The "Kid at Christmas" effect:

It can be when you have just self-collected or "silver-picked" a long sought after specimen for your collection. The enlightenment you feel at learning another nugget of information about your favorite specimen, species, or locality. Or just simply experiencing the joy of discovering a new and exciting hobby that you had no idea would bring you such enjoyment.

We just had another quarry dig yesterday that brings this point solidly home. The majority of our recent new members joined the group at the quarry and it was the first time that many of them had ever been in a quarry. It was bitter cold and to our surprise, one of them brought everyone a large gallon of coffee and all the associated necessities. It was a welcome and wonderful surprise that we appreciated very much (incidentally, I gave him my first good Calcite crystal specimen as well, thanks buddy!). Once in the quarry, we stepped out of the vehicles and there were great looking exposures of Calcite crystal-laden boulders, five feet from the cars! It was on! The looks on everyone's faces, members old and new, were the same. Wide-eyed and ready to open our "presents", we dove in. You could almost hear the wrapping paper tearing...

Thanks so much again,
Chris Luzier

GLMSMC Regular Meeting Minutes

March 9, 2015

David Fryauff, Secretary

The March 9, 2015, GLMSMC meeting was called to order by President Chris Luzier at 7:45 pm, with approximately 52 people (42 adults, 10 youth) attending. The February Regular and Board meeting minutes were approved. Chris announced that if there is a BOD representative to the EFMLS meeting in Hickory, NC, on March 27-29, GLMSMC will reimburse up to \$200 of their meeting-related expenses. Chris invited volunteers to participate in the Rockville Science Center's Rockville Science Day at Montgomery College on April 26th. Karen Lottes agreed to volunteer again this year. The Super Dig conflicts for several members.

Annual Show Report

Pat Repik-Byrne announced that we have 55 Exhibits, 11 Demonstrations, and 22 dealers scheduled for this year's 51st annual show. This representation is comparable to that of previous years. Fliers were circulated to all members asking that they distribute and post to give advance public notice and publicity for the show. Andy Muir mentioned that one of the dealers scheduled for our show has need of an assistant from our society and that their time/assistance would be rewarded. Joel Rosen announced that he would have the trailer in front of Building 6 at the fairgrounds at 9 am on Friday, Mar. 20th to start setting up and greatly hoped for excellent assistance from our capable and experienced members.

Membership Chairman Report

Doug Baum announced and welcomed Leonard Deerkoski and John Cardinelli to the meeting. It was M/S/A to accept these guests as GLMSMC members.

Field Trip Chairman Report

Jonathan Harris announced the following future field trips:

Mar. 28: Medford Quarry

Apr. 18: Manassas Quarry

Apr. 25: Sterling Hill Super Dig & Franklin NJ Gem & Mineral Show

EFMLS Committee Report

EFMLS Liaison Wendell Mohr announced that the Rockville Science Center will present a talk on volcanoes and volcanism on Mar. 24th. The Rockville Science Center has a list of all upcoming events and welcomes sign-ups by GLMSMC members who are willing and able to assist in these demonstrations.

Gerald Elgert Reported

Elmer Lantz had fallen and broken his hip. Elmer Lantz is still recovering from his injury but wants to provide grinding wheels for use at the show.

Treasurer's Report

Treasurer Holly McNeil announced that the bulk of expenses for our 21-22 March 2015 annual show had been paid. At this point we really need the time, attendance, and manpower of our members to set up and run the show.

Presentation

Dr. Jeff Post, Geologist, Gemologist, and Curator of the Smithsonian Institution collection of Minerals and Gems presented “What’s New at the Smithsonian during 2014” slide show that took his audience to the 2014 Tucson show where the Smithsonian Institution exhibit (Theme: Western European Gems & Minerals) won first place. Dr. Post also took the audience on his “Great Montana Sapphire Adventure” which was conducted during 2014 to enable The SI to study and acquire rough and cut sapphire specimens from four notable locations in Montana. Interestingly one of the first uses of Montana sapphires was as precision bearings in Swiss watches. Dr. Post stated that virtually every natural sapphire we see on the market as



Dr. Jeffrey Post. Photo by Wendell Mohr

a gemstone have been heat-treated to develop their distinctive color. This heat treatment is a specialized, multi-step, and sometimes secret process that creates oxidizing and reducing conditions that alter the elemental chemistry of the sapphires. Oxidation of iron (Fe) in the sapphire enhances colors of naturally green and yellow stones. Red and pink stones owe their color to Chrome (Cr) but are unaffected by heat-treating. The classic sapphire blue of initially colorless and grey stones is produced by a combination of methane gas and heat in the range of 700-800 °C.

Adjournment:

It was M/S/A to adjourn at 9:50 pm.

Show table

A classic specimen of Fluorite from the famous Cave-in-Rock Mine in Illinois was won by Diane Leaman. The general door prize (won also by Diane Leaman!) was a cabinet-sized specimen of beautifully crystallized Chalcopyrite & Quartz from the Huaron Mine, Pasco Department, Peru.

GLMSMC SHOW TABLE

March 9, 2015

Dave Fryauff

Member's Name	Specimen Descriptions	Locality
Jeff Cessna	Poldervaartite	N'Chwaning Mine, South Africa
" "	Arsenide? Willemite, Calcite	Franklin, NJ
Gary Leaman	blue-green Beryl	Brazil
Diane Leaman	Meionite (Wernerite)	Grenville, Quebec, Canada
Barb Burr	Elbaite (Tourmaline) in Beryl	Poco d'Ante Mine, Itinga, Minas Gerais, Brazil
Wendell Mohr	Galena	Brushy Creek Mine, Reynolds, Co., MO

Gerald Elgert	Petrified Wood	Dinosaur Park, MD
Andy Muir	Malachite-Chrysocolla sphere	Unknown
" "	Elbaite (var. Indicolite) sphere	Maine
" "	Elbaite (var. Rubellite) w. Scapolite sopher	Rumford, Maine
Dave Hennessy	Calcite	Kelly Mine, Socorro, NM
Joel Rosen	Gemmy Willemite	Franklin, NJ
Nancy Shinowara	Powellite on Stilbite	Nashik, Maharashtra State, India
Don Greaves	Brecciated Mookaite	Western Australia
Chuck Mason	Petrified Wood (Araucaria sp.)	Northern Arizona
Andy B (Celmer)	Prairie Agate	Fairburn, SD
Dave Fryauff	Siderite*	Savage Mtn., Frostburg, MD
" "	Hemimorphite, Chalcophanite, Hydrohetaerolite	Wolftone Mine, Leadville, CO
Steven Calamuci	Tourmaline	Pakistan
" "	Quartz, Galena, Sphalerite	China
George Durland	Tugtupite, Sodalite	Greenland
" "	Sodalite	Greenland

*Asterisk denotes self-collected or self-made



**SHOW TABLE:
SHARE AND
HAVE A
CHANCE AT A
PRIZE!**



**PHOTOS
BY
WENDELL
MOHR**



GLMSMC BOARD MEETING MINUTES

March 16, 2015

Jonathan G. Harris Recording

Attending Chris Luzier, Andy Celmer, Andy Muir, Doug Baum, Jonathan Harris, Joel Rosen, Holly H., David T, Wendell Mohr, and Pat Repik-Byrne. The board discussed and agreed with Jeff Nagy's plans to add additional material to the website. Chris Luzier will write and forward to all members an announcement of the auction and view time of the large Hyland Park Cabbng Machine that is currently in Andy Celmer's garage. Board members discussed logistics concerning show setup and operations. Some board members observed that they were not receiving emails being broadcast to the board mailing list. It appeared to be that emails sent by certain members were being blocked by Yahoo. Jonathan agreed to investigate. No one has applied for subsidy to attend the Wildacres Workshop. Karen Lottes will represent the Society at the Rockville Science Day, Sunday April 26th.

FOLLOW UP ON BOARD EMAIL PROBLEM

Jonathan G. Harris

I verified that Yahoo list members were not receiving emails sent by other members who were also on Yahoo, but were receiving messages sent by board members from gmail accounts. After some research, it appears that in 2014 to reduce spam and forgery Yahoo changed its policies to block email addresses that appeared to originate from servers that were different from the locations implied by the headers. While some other providers just routed such messages to the "SPAM" or "JUNK" folder, Yahoo completely blocked such messages. Messages sent by Yahoo users through the list server triggered this new blocking policy.

I have identified a listserv setting that alters the headers of the messages so they won't appear to be forgeries or spam to such filters. That setting is now set for all GLMSMC member and board email lists.

VOLUNTEER WANTED

Wendell Mohr

Wendell Mohr has asked that someone else step forward to take pictures at meetings and GLMSMC events. You don't need to be a professional to take snapshots of Mini Miners, FRA meetings, speakers and their material on exhibit, door prizes and show table items, show table participants, and other pictures of interest to the membership.

You don't need a fancy camera. Current tech equipment will do just fine. Simply take pictures (unless people request that you do not take photographs of them) and send condensed copies to the Rockhounder editor. If you wish, you could crop, eliminate "red eye", or otherwise edit them. That is up to you.

Wendell needs to retire from this activity he has been doing for many years.

FUTURE ROCKHOUNDERS OF AMERICA (THE MOCKS)

Ages 10-15

Mark Dahlman with Photos by Wendell Mohr

Next Meeting Date: April 13, 2015

Meeting Time: 7:45-9:00pm

Meeting Location: Sunroom Cafeteria at the Rockville Senior Center

March 9th Meeting

Starting off our activities for the “The World in Miniature” badge, our own Ryan Gunnison and his father John gave the group an excellent presentation on micros, thumbnails and miniatures. Ryan showed us what he uses to trim the rocks down to size, how to mount the specimen, and what he uses for viewing the micros. Ryan and Mr. Gunnison gave a demonstration of micro-mineral photography showing the digital camera, lights and bellows they use to take their marvelous mineral photos. Thanks again to the Gunnisons!



Each FRA member also mounted a couple of their own specimens thanks to the beautifully prepared micro-mount kits (specimens, labels, boxes, and tacks) provided by Maureen Campeau and Rodney Lee of Simkev Micromounts. In addition, our FRA attendees took home some of the outstanding mounted specimens donated by Ms. Campeau, Mr. Lee, and Pat Haynes.



Congratulations to our FRA members who entered exhibits at our club show in March! They were very creative, informative, and attractive – something to be very proud of!! And thank you to the club members who helped to make our show successful. It was great to see FRA families taking part in the show.

April 13th Meeting

FRA members should bring their loupes to our April meeting since we will be continuing on our World in Miniature activities. Also, if members already have 10 labeled micromounts (requiring magnification to appreciate them), 10 labeled thumbnails (typically in 1” boxes), and/or 10 labeled miniature specimens (in 2” boxes) in their collection, please bring them to our meeting so you can receive credit toward the badge. See you at our meeting!

For more information on the Future Rockhounds of America program, please contact Mark Dahlman at <fra_advisor@glmsmc.com> or 301-428-0455.



JUNIOR EXHIBITS AT OUR MARCH SHOW

Wendell Mohr

The society takes great pride in the education of our junior members. Several exhibits demonstrated the avid interest of the FRA members who participated in the show by entering an exhibit.

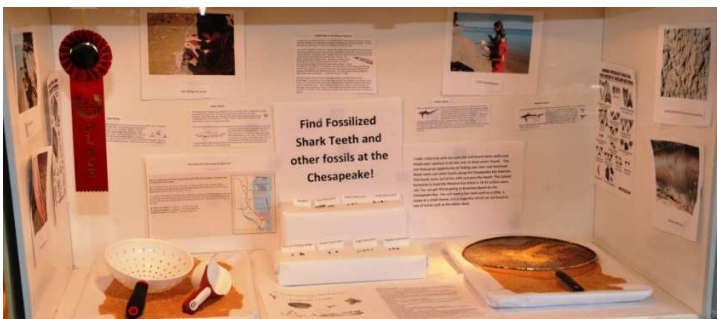


Lillian Turner, now deceased, and her son Stephen have graciously supported our group by generous donations to further the education of children. One of the things that funding provides is a cash prize for winning exhibits.

After carefully reviewing the cases, the judges selected this year's winners and awarded ribbons and cash.



First Place: Ryan Gunnison for his exhibit on "Magnificent Micromounts."



Second Place: Peter Korenko for his "Fossil Shark Teeth" exhibit.



Third Place: Edward Durland, son of Eric Durland and grandson of George Durland for his “Cincinnati Fossils - Self Collected” exhibit.



Fourth Place: Cooper Batchelder with his “Lower Ordovician Fossil display.”

Photos by Wendell Mohr except last lower right picture by Holly McNeil

FIELD TRIP REPORT –BLUEGRASS MATERIALS MEDFORD QUARRY

Jonathan Harris

A dozen hardy rockhounds braved freezing weather for our collecting trip at Blue Grass Material’s Medford Quarry. The quarry representative, Brian Singer, gave us our safety briefing and escorted us to a section of the “Pit II” that has been known to produce large and attractive calcite crystals.

The Medford Quarry mines Wakefield Marble for riprap and building materials. At times they have also mined a small I deposit of metabasalt in the upper level of one of the pits. About a year ago Lafarge sold its Maryland Quarries, including Medford, to Blue Grass Materials, the current owner.

The quarry is known for its fluorescent calcite specimens, but it also has produced small specimens of copper minerals, galena, pyrite, and other metal sulfides as well as manganese oxides dendrites.

Our section had abundant boulders with faces and vugs laced with calcite crystals. All got their fill of calcite. Sam Linton found a particularly interesting vug that had thin tabular brown crystals, likely pyrrhotite (an iron sulfide). Some had small green hemispheres on them.



Photos from trip: Top left—Pyrrhotite on calcite crystals (found by Sam Linton) in a cavity. Top right & bottom left—collectors in action. Bottom right—deer serving as reminder of importance of safety in quarries.

FIELD TRIPS

Jonathan Harris

Vulcan Manassas Quarry:

Saturday, April 11 or April 18, 7am-12pm

Pending confirmation. This is a diabase quarry that has produced a variety of minerals—prehnite, stilbite, stellerite, chabazite, heulandite, calcite, epidote, pyrite, chalcopyrite, and others.

Directions to Vulcan:

1. From 495 go West on Rt.66.
2. Head west on Exit 44 0.9 mi
3. Merge onto Prince William Pkwy/VA-234 S 2.7 mi
4. Turn left at Wellington Rd 0.5 mi
5. Turn left at Vulcan Ln

The destination will be on the right 0.1 mi

8537 Vulcan Lane, Manassas, VA 20109

Superdig at Sterling Hill Mining Museum:

Ogdensburg, NJ

Saturday, April 25, 9am-11pm.

Advance signup recommend. Visit <http://www.sterlinghill.org/> to get details and sign up. This is an official club field trip.

National Limestone Quarry:

Mt. Pleasant Mills, PA

Saturday June 13, 9am-??

If there is sufficient interest, then it is likely we can all go to the nearby Middleburg Quarry. This is a great site for wavellite, strontianite, fluorite (purple masses) and more recently variscite and turquoise. Collectors should bring a specimen from some other location for Eric Stahl, the manager of National Limestone Quarry. If the operator blasts in certain sections, celestite and sphalerite might also be found.

The trip will start at 9am at the quarry office. Mt. Pleasant Mills is about 3-3.5 hours away, but it is worth it! Children 10 and older are permitted, but parents must stay near and supervise their children and leave the quarry with them if they get too restless to be safe.

Please RSVP by the Wednesday before the trip and read and agree to the waiver in the email message (same waiver as prior trips in 2015). Quarries are now often requesting that we have a minimum number of people so that their employees' time will be used effectively. Thus it is important that people who sign up on these and other trips attend.

Directions

Summary: 150.7 miles (2 hours, 50 minutes)

9:04 AM 2.9 Going North- I-270 [Dwight D Eisenhower Hwy] 26.7 mi I-270 / Frederick

9:30 AM 29.5 Road name changes to US-40 [Baltimore National Pike] 0.6 mi

9:30 AM 30.1 Road name changes to US-15 [US-40] 68.3 mi
 9:56 AM 55.9 Entering Pennsylvania
 10:42 AM 98.4 Bear RIGHT (North-East) onto Ramp 153 yds PA-581 / I-83 / Harrisburg / Hershey
 10:42 AM 98.5 Take Ramp (RIGHT) onto SR-581 [Harrisburg Expy] 2.1 mi
 10:44 AM 100.5 Road name changes to I-83 1.2 mi
 10:45 AM 101.8 At exit 43, turn RIGHT onto Ramp 0.6 mi State Capitol / 2nd St
 10:46 AM 102.3 Turn RIGHT (East) onto Paxton St 0.3 mi
 10:46 AM 102.6 Turn LEFT (North) onto SR-230 [S Cameron St] 0.7 mi
 10:48 AM 103.3 Keep STRAIGHT onto SR-230 [N Cameron St] 1.3 mi
 10:50 AM 104.6 Road name changes to N Cameron St 54 yds
 10:51 AM 104.6 Road name changes to US-22 [N Cameron St] 0.5 mi
 10:52 AM 105.2 Keep STRAIGHT onto US-22 22.3 mi
 11:16 AM 127.5 Keep RIGHT onto Ramp 0.2 mi PA-34 / Newport / New Bloomfield
 11:16 AM 127.7 Take Ramp (RIGHT) onto SR-34 [Red Hill Rd] 4.5 mi PA-34
 11:22 AM 132.2 Keep STRAIGHT onto SR-34 [Hunters Valley Rd] 3.2 mi
 11:25 AM 135.4 Turn LEFT (North) onto US-11 [US-15] 6.1 mi
 11:38 AM 141.5 Turn LEFT (West) onto SR-104 8.5 mi

Find your way to Mount Pleasant Mills, PA, which I got to show on Yahoo Maps. Mount Pleasant Mills is located at the junction of Routes 35 and 104. From this junction, go north on Route 104 about one-third of a mile and make the first left turn (Heister Valley Rd). Proceed a little ways to the first left turn on this road (sorry, didn't get the name) and you've reached the Quarry entrance.

SUMMARY

Driving distance: 150.7 miles
 Trip duration: 2 hours, 50 minutes
 Driving time: 2 hours, 50 minutes

WEBSITES OF INTEREST

Contributed by Wendell C. Mohr



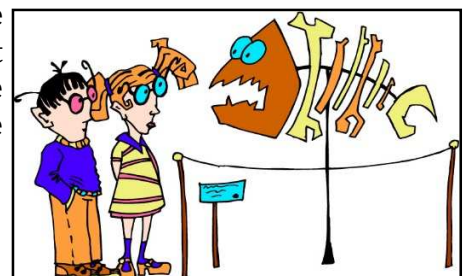
Photo AAJ News

Study of the Blue Moon Diamond is a publication of the Gemological Institute of America authored by Eloïse Gaillou, Jeffrey E. Post, Keal S. Byrne, and James E. Butler. If you missed Jeff Post's talk at the March meeting, here is a more detailed study of the famous newly found stone. Discovered at the Cullinan mine in S. Africa in January 2014 and purchased a month later for \$25.6 million, it set a record price per carat for a rough stone. Materials and methods are described and

results are published. The rough 29.62 carat stone was cut by grinding (so no cut-off pieces were available for study!) and resulted in a 12.03 carat finished, internally flawless, vivid blue stone.

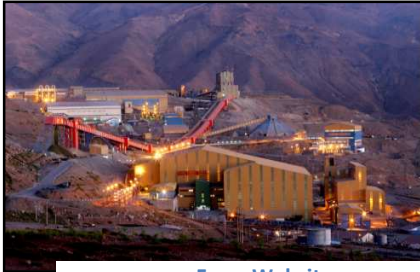
<<http://www.gia.edu/gems-gemology/winter-2014-blue-moon-diamond>>

"Fossil Friday" is a first for this column. Here is a twitter site with a huge mix of little snips about fossils posted by most anyone. New posts are made on Friday each week. Many have links to further information. There are too many to elicit here



so take a peek and check for yourself. There is even a National Museum of Natural History time lapse video of the fossil hall renovation in a March 6th post. If you click on “Photos-View All” you will get only the pictures without source or comments

<<https://twitter.com/hashtag/fossilfriday/>>



From Website

World’s Largest Underground Mine by Cecilia Jackson for mining.com is about the El Teniente Mine in Chile. It is government owned and has been in operation since 1905. Employing 400 staff and 11,000 contractors, it is the world’s largest copper producer. Gain insight to this huge modernized facility which will continue to produce for years to come. The ore is less than one percent copper

but it is extensive and mined by largely automated methods.

Over 3,000 km of underground tunnels — about the distance from Las Vegas to New York — and close to 1,500 km of underground roads have been developed in the mine since it began operations.

<<http://www.mining.com/worlds-largest-underground-mine-looks-like-38052>>

EVENTS OF INTEREST

- **April 10, 2015 Friday** 6pm-9pm, **April 11, 2015 Saturday** 8am-9pm. Atlantic Micromounters Conference, Spring Hill Suites Alexandria Marriott, see <http://www.dcmicrominerals.org/>.
- **April 11, 2015** 10 am- 3 pm, Geology of Harpers Ferry, Leader, Joe Marx. Members \$30, nonmembers \$42. Harpers Ferry sits astride the junction of the Potomac and Shenandoah Rivers. In a 5 -6 mile walk along the C & O towpath, upstream from the railroad bridge and back, we will stop to look at local stones incorporated in the canal wall or river rock exposures.
- **April 15, 2015** Gemology (Advanced.) 8 sessions weekly beginning Wed. April 15, 10:00am – 12:15pm. Cost \$85. Prerequisite: Beginner or Introductory Class – Interested in gemstones, but already know a little something about them? Want to learn more? Curious about gemstone lore and stories? This class examines gemstones and gemstone groups. Examples and hands-on specimens to “Play” with each morning. Perhaps a guest speaker, maybe even a field trip. Instructor, our own Timothy Morgan. Class #405704. Online registration <recweb.montgomerycountymd.gov> or phone 240 777 6840.
- **April 16, 2015** Gemology I Introductory. 11 sessions weekly beginning Thur. April 16, 10:00am – 12:15 pm. Cost \$85. Potomac Community Recreation Center. Ages 18 & up. Want to know about those gems you have on your rings, necklaces, bracelets, brooches? Curious about how gemstones came to be? Beginning Gemology, organized around the Mohs scale of hardness, is an introduction to gemstone study. Hands-on specimens and examples to examine during each class. Instructor, our own Timothy Morgan. Class #405703. Online registration <recweb.montgomerycountymd.gov> or phone 240 777 6840.
- **April 18, 2015** Saturday 10 am – 5 pm. Patuxent Lapidary Guild, Inc. Annual Gem, Jewelry, Fossil, and Mineral Show. Earleigh Heights Fire Hall in Severna Park, MD 21146. Admission \$1.00/person. Children under 10 Free.

- **April 25-26 2015** Saturday & Sunday. Superdig and garage sale at the Sterling Hill Mine and Museum(9am-11pm). 43rd Annual New Jersey Earth Science Association Gem & Mineral Show, Franklin Borough School, 50 Washington Avenue, Franklin, NJ (Sat. and Sunday). See <http://www.sterlinghill.org/visitor/schedule.php#events> & <http://www.sterlinghill.org/>
- **May 2, 2015** Saturday 12:00pm-2:00 pm. Montgomery County Parks and Recreation Program: Jewelry Class – Basic Beading Ages 12 & Up: Learn the basic skills of stringing beads and findings for simple jewelry design to create earrings, bracelets and necklaces. Will complete several pieces in class. Ideal class for beginners or those who desire to refine their skills. Bring a basic tool kit of flatnose pliers, roundnose pliers and wire cutters. \$10 material fee due to instructor in class. 1 Session - \$35. Instructor: Renee Prioleau Class, #405233, at Wisconsin Place Community Recreation Center.
Online registration <recweb.montgomerycountymd.gov> or phone 240 777 6840.
- **May 9, 2015.** Saturday 8am-3PM South Penn Spring Swap & Sale. South Mountain Fairgrounds, 1.5 miles west of Arendtsville, PA on Rt. 234 (615 Narrows Road, Biglerville, PA 17307) . Adults \$1. Children Free. Sponsored by Central Penn and Franklin County Rock & Mineral Clubs Contact Tom Smith tsmith1012@comcast.net.
- **June 29 - July 2,** Rockville City Camps, Croyden Creek Nature Center Geology and Exploration 9:00a-12:00p Age: 8-12, [50265 6/29-7/2](http://www.rockvillemd.gov/index.aspx?NID=359) \$125/\$145 For Descriptions and Registration: <http://rockvillemd.gov/index.aspx?NID=359>
- **July 6 - July 17** Bullis Summer Program. Geology & Exploration 8:45a-10:45a Age: 9-14 Fee: \$250 Space 1:30p-3:30p Age: 9-14 Fee: \$265 For Descriptions and Registration: <http://www.bullis.org/summer-programs/>
- **July 20 - July 31** Bullis Summer Program. Geology & Exploration 8:45a-10:45a Age: 9-14 Fee: \$250 Space 1:30p-3:30p Age: 9-14 Fee: \$265 For Descriptions and Registration: <http://www.bullis.org/summer-programs/>
- **Audubon Naturalist Society,** New on-line registration for all programs below. Visit <www.ANShome.org/adultnatureprograms> and click on "Register Online"
Questions? Call Pam at [301 652 9188 extension 16](tel:3016529188) or e-mail <pamoves@anshome.org>

If you are planning a trip and want to know what clubs you might be able to visit, it would be worthwhile to visit the American Federation of Mineralogical Societies website. Check out their newsletter archives at <http://www.amfed.org/news/default.htm>.



BOARD OF DIRECTORS

President – Chris Luzier, 847 Springdale Drive, Millersville, MD 21108-1436, 443-995-5363

Vice President – Dave Tiktinsky, 9209 Laurel Oak Drive, Bethesda MD 20817-1937, 301-365-2812

Secretary – Dave Fryauff, 24109 Sugar Cane Lane, Laytonsville MD 20882-4031, 301-253-1687

Treasurer – Holly McNeil, 22 South Duke Street, Rockville, MD, 20850-1014, 301- 605-7179

Junior Advisor–Rod Towers, 19609 Gunners Branch Road, Germantown, MD 20876-2738, 301-972-1264

Field Trip Chairman – Jonathan Harris, 11932 Goya Drive, Potomac, MD 20854-3313, 301-545-0808

Membership Chairman – Doug Baum, 11205 Golden Meadow Ct., Germantown, MD 20876-1740, 301-515-4641

Show Co-Chairperson – Pat Repik-Byrne, 9 Starlight Court, Potomac, MD 20854-2658, 301-279-5962

Show Co-Chairperson – Andy Muir, 17949 Hazelcrest Drive, Gaithersburg, MD 20877-3761, 301-990-1370

Property Manager – Joel Rosen, 833 Rampart Way, Union Bridge, MD 21791-9325, 410-775-7937

Immediate Past President – Andy Celmer, 4798 Mid County Court, Monrovia, MD 21770-9417, 301-305-0229

EFMLS Liaison – Wendell Mohr, 9509 Emory Grove Road, Gaithersburg, MD 20877-3501, 301-926-7190

Bulletin Editor– In Transition

Life Members: Larry Harrison, Wendell Mohr, and Juan Proaño

Society Address: Gem, Lapidary, and Mineral Society of Montgomery County MD., Inc.

P. O. Box 444, Gaithersburg MD 20884-0444; Web Site: <http://www.glmsmc.com/>

All Society correspondence is to be sent to this address except that which is intended for the *Rockhounder* and its editor. Such items are to be sent to the editor's email address –

BulletinEditor@glmsmc.com

Permission to copy material printed herein, except specifically copyrighted items, is granted, provided credit is given.

Award Winning Bulletin
EFMLS, AFMS



TIME SENSITIVE
DATED MATERIAL
FIRST CLASS MAIL

THE ROCKHOUNDER
Gem, Lapidary, and Mineral Society
of Montgomery County, MD, Inc.
Kristin Lolmaugh
1282 Terrace Lane
Arnold, MD 21012