



The purpose of the Gem, Lapidary, and Mineral Society of Montgomery County MD, Inc. is “to increase knowledge and popular interest in earth sciences, geology, mineralogy, paleontology, lapidary arts, and related subjects.”

REGULAR MEETINGS

Next Meeting: Monday March 9, 2015 7:30 PM

David Tiktinsky

The following is the info for our March speaker

Jeffrey E. Post, Ph.D.
Curator, National Gem and Mineral Collection
Smithsonian Institution

Title of talk:

“What’s new in Smithsonian Gems and Minerals”

Biography - Dr. Jeffrey E. Post

Dr. Jeffrey Edward Post, a native of Wisconsin, received Bachelor of Science degrees in geology and chemistry from the University of Wisconsin - Platteville, and his Ph.D. in chemistry, with a specialty in geochemistry, from Arizona State University. Prior to joining the Department of Mineral Sciences at the Smithsonian Institution in 1984, he was a Postdoctoral Research Fellow for three years in the Department of Geological Sciences at Harvard University. From 1989 to 1994, he was Chairman of the Department of Mineral Sciences, and since 1991 has served as Curator of the U.S. National Gem and Mineral Collection. Dr. Post served as the lead Curator for the Janet Annenberg Hooker Hall of Geology, Gems and Minerals that opened in 1997.

His areas of research interest include mineralogy, gemology, geochemistry, crystallography, and electron microscopy. He has published more than 75 scientific articles in these fields.

Dr. Post is married and has two daughters.

BOARD OF DIRECTORS MEETING

The Board of Directors will meet 7:30 PM **Monday March 16, 2015** at the home of Andy Muir. Board members are expected to be there. Any member is welcome to attend, but please let Andy know if you plan to attend at amuir21@comcast.net or phone 301-990-1370.

PRESIDENT'S MESSAGE

Chris Luzier

Well, we have just gotten bombed again with another snowstorm and I woke up to a very icy Sunday morning. It looks like a nice morning to put on ice skates and head up and down the street! What a mess-- It does however, give us the time to be able to plan and set-up our displays for the show and get everything organized. As I write this, the show is a month away and we are trying to get as many of the last minute needs filled as we get closer and closer to the date. We have been getting more volunteers signing up for the show but are still in need of more people to fill the vacancies. There are still spots available with any aspect of the show, and most especially in the lapidary shop in the morning, of both Saturday and Sunday. We especially need help with set-up on Friday and takedown on Sunday as well. Many hands make light work---

Our next meeting is also one of our most popular speakers of the year, Dr. Jeffrey Post from the Smithsonian will be there for our annual Tucson Show update. This meeting is always well attended and we will have the show sign-up sheets available so we can fill in the last vacant spots. Thanks so much again!!!

There are also many other exciting trips and events coming up in our local area and on a more regional basis as well. They are important and I didn't want to just put them in our regular, upcoming events section. The first to put on your calendar is the annual Rockville Science Day, on Sunday April 26th at Montgomery College. We typically have a couple of volunteers for this show, George Durland being one of them, (who we just conferred the GLMSMC award of Life Member to) Mark Dahlman, and Rod Towers. We just found out recently that Rod will be retiring and heading back to his home state of Texas. We will miss him and his service for the club and thank him so much. If you are interested in volunteering for the Rockville Science Day, please let me know and I will forward you the information.

The regional events that I wanted to share with you are at the Eastern Federation of Mineralogical & Lapidary Societies level. The EFMLS has the 65th Annual on the weekend of March 27th in Hickory, NC. This is a great opportunity to meet and mingle with other mineral group folks from all over the United States. There are excellent field trips and associated events through the weekend. We would be able to sponsor someone to attend as a representative for our mineral group if you are interested. The next regional events are the annual Wildacres sessions, offered in the Spring on May 18-24th and the Fall session is from August 24-30. Wildacres is a crafting/lapidary workshop classes with excellent lodging and food. Talk to anyone who has been to the Wildacres week and they will tell you it is well worth your time!!!

Peace to you—Chris Luzier

Our next meeting is one of our most popular speakers, with Dr. Jeffrey Post from the Smithsonian Institution, giving his annual update for us of the Tucson show.

Regular Meetings.....	1
Board of Directors Meeting	2
President's Message.....	2
Chris Luzier.....	2
GLMSMC Regular Meeting	
Minutes	3
February 9, 2015.....	3
GLMSMC Board Meeting	
Minutes	3
Feb. 23, 2015. Jonathan G. Harris Recording	3
Volunteer wanted.....	5
Wendell Mohr	5
George Durland Life Member Award	5
Future Rockhounds of America (the Mocks)	6
Ages 10-15.....	6

GLMSMC REGULAR MEETING MINUTES

February 9, 2015

The February 9, 2015 meeting was called to order by President Chris Luzier after the auction set-up that began at approximately 7:30 pm. There were approximately 49 people (39 adults, 10 juniors) in attendance. It was M/S/P to approve the minutes of the January 12, 2015 regular meeting and of the January 19, 2015 BOD meeting.

President: Chris began by explaining the operation of the auction that would serve as the program for the evening. He then discussed the upcoming show. There are several positions still open, particularly in the lapidary shop. Members are encouraged to support their club by signing up and working at the show. The club is also still in need of a full-time editor. Additionally, there is need for a photographer to provide content for the newsletter at least from the meetings.

Show: Andy Muir reported that the upstairs portion of the show was “on target.” Pat Repik-Byrne reported that sign-ups for show cases were light, with 15 so far. Demonstrator positions have some verbal agreements and she expects more. There is a rule prohibiting the use of masking tape in the show cases. The club will provide painters tape.

Field Trips: Jonathan Harris discussed several upcoming field trips, including Medford Quarry in March, thanking the efforts of Sam.

Past President: Andy Celmer announced that Patricia and he had just paid off their mortgage. There was much rejoicing.

EFML Liaison: Wendell Mohr noted that volunteers were needed in two positions for members to represent the club at the upcoming EFMLS show in Hickory, NC on 27-29 March 2015. The President and the EFMLS liaison are unable to attend. The club will reimburse \$200 for travel expenses. Contact the club President.

Membership: In honor of continued service to and support of the club, with particular attention to the educational mission, Chris Luzier announced the Board of Directors decision to bestow a **Lifetime Membership** to **George Durland**. The members showed their glowing appreciation of George’s efforts.

Program: The program for the evening was the second annual club-member auction. Thanks everyone for their participation.

Adjournment: It was M/S/P to adjourn the meeting at 9:55 PM.

Jeff Cessna, Secretary pro tem.



Chris Luzier Auctioneer. Photo—J. Harris

GLMSMC BOARD MEETING MINUTES

Feb. 23, 2015. Jonathan G. Harris Recording

In attendance: Chris Luzier, Jonathan Harris, Wendell Mohr, Pat Repik-Byrne, David Tiktinsky, Andy Muir, Andy Celmer, Joel Rosen, and Holly McNeil.

Motions voted on.

The board unanimously passed a motion to not have the Montgomery County gold exhibit at this year's show. This was based on the difficult logistics and likely high cost of insurance required by the park service, also considering that some of the material is currently on exhibit at the Great Falls Tavern.

Action items.

Chris to complete and submit to Rockhouser article on George Durland's award.

Jonathan to obtain new members information to add a welcome piece to the Rockhouser.

Action items—show related.

Andy Celmer will be the backup lapidary shop manager .

Chris will look into getting magnetic strips for children to use to mount the cabochons and bring a donated dop pot.

Chris will help with show signage early Saturday morning and take down signs outside of the fairground Saturday night.

Chris will discuss with people involved with making cab pre-forms on whether someone would purchase the donated Highland Park Cab machine and commit to making pre-forms for future show years. The other option is to auction the machine, but the club may be better off selling it at a discounted price in return for agreements to make the pre-forms. The machine needs expensive repairs and the current dealer making the pre-forms indicated he would not be willing to do so in the future. The price for the pre-forms this year will total \$350.

Chris will contact Jim Koska concerning a Wild Acres Poster to set up at our show.

Andy Muir agreed to put up the signs early Sunday morning; Chris will not be available then.

Andy Muir will obtain 22 specimens for door and raffle prizes from show dealers, offering up to \$25/specimen.

Andy Muir will check the UV lamps to see if any bulbs need replacement, as George Durland had reported that one appeared somewhat dim.

Wendell will create the blank certificates and gift certificates for demonstrators and exhibitors.

Show challenges:

We are short staffed on the morning shifts, especially in the lapidary shop.

Conrad Smith is running the scout table. It is not clear how many tables he needs.

We still need to get flyers on the show to people.

Other information/reports

We have 51 members signed up to help in various aspects of the show.

Holly purchased quiz prizes for \$400, \$200 less than expected due to favorable pricing from Tom Cummins.

The Eastern Federation Convention will be in Hickory, NC March 27-29. We currently still have no representatives planning to attend.

VOLUNTEER WANTED

Wendell Mohr

Wendell Mohr has asked that someone else step forward to take pictures at meetings and GLMSMC events. You don't need to be a professional to take snapshots of Mini Miner's and FRA meetings, speakers and their material on exhibit, door prizes and show table items, show table participants and other pictures of interest to the membership.

You don't need a fancy camera. Current tech equipment will do just fine. Simply take pictures (Unless a person requests that you take no photographs of them) and send condensed copies to the Rockhouser editor. If you wish, you could crop, eliminate "red eye", or otherwise edit them. That is up to you.

Wendell needs to retire from this activity he has been doing for many years.

GEORGE DURLAND LIFE MEMBER AWARD

Chris Luzier

Shining the (UV) light on George Durland, the Board of Directors has conferred the Lifetime Membership on George Durland for all of his service and help to the GLMSMC.

A retired IBM employee, he grew up near Franklin, NJ where his father chemically analyzed ore from the world famous zinc mines. No wonder his specialty has always been fluorescent minerals! George has been a member of our group since before the bicentennial and education and outreach have been hallmarks of George's membership. He has given numerous talks to scouts, school students, and others. He has faithfully taken part in the Rockville Science Center's, Rockville Science Day at Montgomery College for years. He also helped judge Geology projects at the Montgomery County Science Fair.

He is a regular participant in our meeting show table and usually has interesting educational aspects to explain about the material he puts on display. George made efforts to enhance the exhibits at the Croydon Creek Nature Center in Rockville as well and has always been known to freely share extra specimens to members and others.

He served as Publicity Show Chair for 10 or more years, sending out or posting literally thousands of notices and flyers every year. Even into his eighties, he tirelessly works every year at our annual show, leading the set-up of the fluorescent tent, demonstrating fluorescent minerals and other properties of minerals to awestruck kids and adults inside the tent. He also then assists with the breakdown and packing of the tent and all of the associated cases.

George also served as President of the GLMSMC in 2004-2005 and the Vice President (Program Chairman) as well in 2003-2004. He has also been the featured speaker at our meetings several times and has fostered interest in minerals within his own family, leading to the membership of his son, Eric, and daughter, Karen.

For all these reasons, the Board of Directors is very pleased to bestow a Lifetime Membership award from the Gem, Lapidary and Mineral Society of Montgomery County, Maryland to Mr. George Durland. Thanks again George!!!

FUTURE ROCKHOUNDERS OF AMERICA (THE MOCKS)

Ages 10-15

Mark Dahlman

Next Meeting Date: March 9, 2015 **Meeting Time:** 7:45-9:00pm

Meeting Location: Sunroom Cafeteria at the Rockville Senior Center

February 9th Meeting:

Mrs. Holly McNeil was our guest speaker for the February meeting. Mrs. McNeil brought enough mineral specimens to fill a display case, and had each FRA member help make the exhibit more attractive. Through this activity the FRA members saw what a difference a good liner makes, how typed labels make the exhibit look better, that adding risers helps, and that thoughtful grouping, spacing, and placement of the minerals makes for a very attractive exhibit. Mrs. McNeil talked about how adding information to the display (especially why you chose the topic of your exhibit) is particularly important. Thanks to Mrs. McNeil for helping us prepare for the club show!

March 9th Meeting:

We are going to start a new badge at our March meeting – The World In Miniature. FRA members should bring their loupes to the March meeting. We will review the requirements for this badge and start on its activities. The club show on March 21st and 22nd will be particularly helpful in earning this badge, so come and learn what to look for at the show. I hope to see you all on the 9th! Don't forget that we still need help at the show – it's a wonderful way for families to spend a couple of hours together helping support our club. Please contact Mrs. McNeil (treasurer@glmsmc.com) to sign up.

For more information on the Future Rockhounds of America program, please contact Mark Dahlman at <fra_advisor@glmsmc.com> or 301-428-0455.

FIELD TRIPS

by Jonathan Harris

Saturday March 28, 9am-12pm. Bluegrass Materials Medford Quarry near Westminster, MD.

Medford is known for its calcite crystals and fluorescent and phosphorescent calcites.

Please RSVP no later than 5PM 5 days prior and confirm that you accept our waiver below and will follow our rules and the quarry rules. Please really try to be on time with the RSVPs as I am not sure whether I can add people afterwards.

Age limit: 16 and older.

Directions:

From Rockville: Take 270 N to Rt. 27. Take Rt. 27 East towards Damascus. You will go about 27 miles on Rt. 27.

Turn left on Nicodemus Road from MD 27. Turn right at Bowersox Road. You will come to an intersection right after a stone Church on the left. Turn left here on Stone Chapel Road There is an entrance to the quarry in a short distance, 0.5 miles, to the right. It is at the sign that says "LaFarge North America MedfordQuarry". Go on the quarry road. You will cross one truck road in 0.2 miles, and another after another 0.1 miles. At the next Road, another 0.1 miles (There is a weigh station on the right at this road) take a left to the parking lot. Meet the designated time.

Lafarge Medford Quarry, 1111 Medford Rd, New Windsor, MD 21776-8902

Saturday April 11 or April 18, 7am-12pm (tentative). **Tentative pending confirmation.** Vulcan Manassas Quarry.

This is a diabase quarry that has produced a variety of minerals—prehnite, stilbite, stellerite, chabazite, heulandite, calcite, epidote, pyrite, chalcopryite, and others.

Directions (to Vulcan):

1. From 495 go West on Rt.66.
2. Head west on Exit 44 0.9 mi
3. Merge onto Prince William Pkwy/VA-234 S 2.7 mi
4. Turn left at Wellington Rd 0.5 mi
5. Turn left at Vulcan Ln

The destination will be on the right 0.1 mi
8537 Vulcan Lane, Manassas, VA 20109

Saturday Aoril 25, 9am-11pm. Superdig. Sterling Hill Mining Museum, Ogdensburg, NJ. Advance signup recommend. Visit <http://www.sterlinghill.org> to get details and sign up. This is an official club fieldtrip.

WEBSITES OF INTEREST

Contributed by Wendell C. Mohr

The **Gemology Project** is a top notch non-profit gemstone and gem science wiki-style database for anyone interested in gemstones and gemology. Every month they highlight a gemstone and a piece of gemstone identification equipment. Click on the topics at the top left for all kinds of useful information, too much to enumerate here. As customary we do not endorse the commercial GemologyOnline Marketplace offerings.<<http://www.gemologyproject.com>>



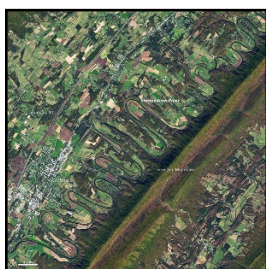
Kunzite - Credit Roger Weller Cochise College

After the Gold Rush, a Toronto Star article By Marco Chown Oved, Staff Reporter, is about the socio-economic impact of mining in far-away Essakane, Burkina Faso. The open pit gold mine built from scratch by the Canadian mining company Iamgold in 2009 displaced 16,000 people. The Canadian government has given over \$6 million in foreign aid. A living story of the impact of mining and its inevitable end as a ghost town when mining ends. Be sure to watch the videos: Dicko goes into his mine, People abandoning new homes, and Golden Wedding Rings Come Full Circle.



From Website

<www.thestar.com/news/world/2014/12/01/burkina_faso_after_the_gold_rush.html>



The Sinuous Shenandoah, a geology story about the meandering river with references from Calan Bentley of Northern Virginia Community College and others. The How and Why of the geologic formation are explained. Featuring NASA photographs from the Landsat 8 satellite.

<earthobservatory.nasa.gov/IOTD/view.php?id=84837>

NASA Earth Observatory images by Michael Taylor and Adam Voiland, using Landsat data from the U.S. Geological Survey.

EVENTS OF INTEREST

- **March 8, 2015 Sunday** 4:00 – 5:00 pm Member Jeff Nagy will be speaking on “Rocks and Minerals of Montgomery County” at the Gaithersburg Community Museum, 9 South Summit Avenue. Free.
- **March 21-22 2015 Saturday** 10am-6pm, Sunday 11am-5pm. Our own show. Please support our club by signing up to help work at the show.
- **March 29, 2015 Sunday** 10 am - 1 pm, Geology at the National Zoo, Leader, Joe Marx. Members \$24, nonmembers \$34. About 480 Million years ago, an arc of oceanic volcanoes merged with the growing continent that would eventually become North America. Within the Zoo grounds metamorphosed sea floor sediments and a large fault zone bear witness to this ancient geologic collision. A hike of about 2 miles will include examination of outcrops. Some parts are rather steep.
- **April 10, 2015 Friday** 6pm-9pm, **April 11, 2015 Saturday** 8am-9pm. Atlantic Micromounters Conference, SpringHill Suites Alexandria Marriott, see <http://www.dcmicrominerals.org/>.
- **April 11, 2015** 10 am - 3 pm, Geology of Harpers Ferry, Leader, Joe Marx. Members \$30, nonmembers \$42. Harpers Ferry sits astride the junction of the Potomac and Shenandoah Rivers. In a 5 -6 mile walk along the C & O towpath, upstream from the railroad bridge and back, we will stop to look at local stones incorporated in the canal wall or river rock exposures.
- **April 15, 2015** Gemology (Advanced.) 8 sessions weekly beginning Wed. April 15, 10:00am – 12:15pm. Cost \$85. Prerequisite: Beginner or Introductory Class – Interested in gemstones, but already know a little something about them? Want to learn more? Curious about gemstone lore and stories? This class examines gemstones and gemstone groups. Examples and hands-on specimens to “Play” with each morning. Perhaps a guest speaker, maybe even a field trip. Instructor, our own Timothy Morgan. Class #405704. Online registration <recweb.montgomerycountymd.gov> or phone 240 777 6840.
- **April 16, 2015** Gemology I Introductory. 11 sessions weekly beginning Thur. April 16, 10:00am – 12:15 pm. Cost \$85. Potomac Community Recreation Center. Ages 18 & up. Want to know about those gems you have on your rings, necklaces, bracelets, brooches? Curious about how gemstones came to be? Beginning Gemology, organized around the Moh’s scale of hardness, is an introduction to gemstone study. Hands-on specimens and examples to examine during each class. Instructor, our own Timothy Morgan. Class #405703. Online registration <recweb.montgomerycountymd.gov> or phone 240 777 6840.
- **April 25-26 2015** Saturday & Sunday. Superdig and garage sale at the Sterling Hill Mine and Museum(9am-11pm). 43rd Annual New Jersey Earth Science Association Gem & Mineral Show, Franklin Borough School, 50 Washington Avenue, Franklin, NJ (Sat. and Sunday).
See <http://www.sterlinghill.org/visitor/schedule.php#events> & <http://www.sterlinghill.org/>
- **May 2, 2015** Saturday 12:00pm-2:00 pm. Montgomery County Parks and Recreation Program: Jewelry Class – Basic Beading Ages 12 & Up: Learn the basic skills of stringing beads and findings for simple jewelry design to create earrings, bracelets and necklaces. Will complete several pieces in class. Ideal class for beginners or those who desire to refine their skills. Bring a basic tool kit of flatnose pliers, roundnose pliers and wire

cutters. \$10 material fee due to instructor in class. 1 Session - \$35. Instructor: Renee Prioleau Class, #405233, at Wisconsin Place Community Recreation Center.
Online registration <recweb.montgomerycountymd.gov> or phone 240 777 6840.

- **June 29 - July 2**, Rockville City Camps, Croyden Creek Nature Center Geology and Exploration 9:00a-12:00p Age: 8-12, [50265 6/29-7/2](http://rockvillemd.gov/index.aspx?NID=359) \$125/\$145 For Descriptions and Registration: <http://rockvillemd.gov/index.aspx?NID=359>
- **July 6 - July 17** Bullis Summer Program. Geology & Exploration 8:45a-10:45a Age: 9-14 Fee: \$250 Space 1:30p-3:30p Age: 9-14 Fee: \$265 For Descriptions and Registration: <http://www.bullis.org/summer-programs/>
- **July 20 - July 31** Bullis Summer Program. Geology & Exploration 8:45a-10:45a Age: 9-14 Fee: \$250 Space 1:30p-3:30p Age: 9-14 Fee: \$265 For Descriptions and Registration: <http://www.bullis.org/summer-programs/>
- **Audubon Naturalist Society**, New on-line registration for all programs below. Visit www.ANShome.org/adultnatureprograms and click on "Register Online" Questions? Call Pam at [301 652 9188 extension 16](tel:3016529188) or e-mail pamoves@anshome.org

If you are planning a trip and want to know what clubs you might be able to visit, it would be worthwhile to visit the American Federation of Mineralogical Societies website. Check out their newsletter archives at <http://www.amfed.org/news/default.htm>.



BOARD OF DIRECTORS

President – Chris Luzier, 847 Springdale Drive, Millersville, MD 21108-1436, 443-995-5363
 Vice President – Dave Tiktinsky, 9209 Laurel Oak Drive, Bethesda MD 20817-1937, 301-365-2812
 Secretary – Dave Fryauff, 24109 Sugar Cane Lane, Laytonsville MD 20882-4031, 301-253-1687
 Treasurer – Holly McNeil, 22 South Duke Street, Rockville, MD, 20850-1014, 301- 605-7179
 Junior Advisor–Rod Towers, 19609 Gunners Branch Road, Germantown, MD 20876-2738, 301-972-1264
 Field Trip Chairman – Jonathan Harris, 11932 Goya Drive, Potomac, MD 20854-3313, 301-545- 0808
 Membership Chairman – Doug Baum, 11205 Golden Meadow Ct., Germantown, MD 20876-1740, 301-515-4641
 Show Co-Chairperson – Pat Repik-Byrne, 9 Starlight Court, Potomac, MD 20854-2658, 301-279-5962
 Show Co-Chairperson – Andy Muir, 17949 Hazelcrest Drive, Gaithersburg, MD 20877-3761, 301-990-1370
 Property Manager – Joel Rosen, 833 Rampart Way, Union Bridge, MD 21791-9325, 410-775-7937
 Immediate Past President – Andy Celmer, 4798 Mid County Court, Monrovia, MD 21770-9417, 301-305-0229
 EFMLS Liaison – Wendell Mohr, 9509 Emory Grove Road, Gaithersburg, MD 20877-3501, 301-926-7190
 Bulletin Editor– Needed
 Life Members: Larry Harrison, Wendell Mohr, and Juan Proaño
 Society Address: Gem, Lapidary, and Mineral Society of Montgomery County MD., Inc.
 P. O. Box 444, Gaithersburg MD 20884-0444; Web Site: <http://www.glmsmc.com/>
 All Society correspondence is to be sent to this address except that which is intended for the *Rockhounder*
 and its editor. Such items are to be sent to the editor’s email address – BulletinEditor@glmsmc.com

Permission to copy material printed herein, except specifically copyrighted items, is granted, provided credit is given.
 Award Winning Bulletin
 EFMLS, AFMS



TIME SENSITIVE
 DATED MATERIAL
 FIRST CLASS MAIL

THE ROCKHOUNDER
 Gem, Lapidary, and Mineral Society
 of Montgomery County, MD, Inc.
 Kristin Lohmaugh
 1282 Terrace Lane
 Arnold, MD 21012