



The purpose of the Gem, Lapidary, and Mineral Society of Montgomery County MD, Inc. is “to increase knowledge and popular interest in earth sciences, geology, mineralogy, paleontology, lapidary arts, and related subjects.”

REGULAR MEETINGS

Dave Tiktinsky

Special Meeting Program for November 9:

Our Hobby, Our Passion:

Get to Know Our Fellow Members' Favorite Things About Gems, Lapidary, or Minerals

We are going to do something special for our November meeting. Instead of a formal speaker, we will be giving our individual members an opportunity to talk for 5-10 minutes about their favorite mineral localities, mineral types, lapidary activities, jewelry or faceting, gem grading, etc. Whatever your passion, the group would like to hear about it. You can bring pictures (we will have the computer projector available), specimens, faceted stones, mineral creations, etc. to show the club. Additionally, if you would like to tell a story about something you collected yourself or a locality that you really enjoyed collecting at, we would like to know. We are looking forward to active participation from our club members.

BOARD OF DIRECTORS MEETING

The next Board of Directors meeting is currently scheduled for Monday, November 16, 2015, at Holly McNeil's home.

PRESIDENT'S MESSAGE

Chris Luzier

It's hard to believe that I am writing the Rockhounder's November message already, but there you go. This year has really shot by and my second term as President is coming to a close. It has been my honor, privilege and pleasure to serve the group and I will miss being your President. That being said, it will give me

more time now to serve the GLMSMC in other ways, as there is always something to do! We have a great slate of officers to elect at the November meeting and they will serve the group well.

The next meeting will be a new event for our group as it will be a discussion format with you, the members, talking about parts of the hobby you love best. Is it lapidary, a certain locality, a species of mineral, colors or crystal form? It's up to you and what you love. Just bring in your specimens, pictures, or handiwork that you want to share with the group, and give a brief presentation on your chosen subject. You never know who else in the group will have the same fascination as you! We will also have a silent auction with a selection of items and large bulk lots of specimens. This is a great opportunity to add some new pieces to your collection for not a lot of money.

With the year rapidly coming to an end, we also are in the middle of show planning for March and I want to ask you again for as much volunteer support as you can provide. This is the one time of year, for one weekend, that we ask for as much help as you can muster! Once the volunteer lists are out, please sign up as early as possible so we know what we have covered in advance. I can't tell you how helpful it is to have the maximum amount of spots filled in and as early as possible. This way we don't have to worry about certain very popular show events, like the lapidary shop and the kids table, having adequate staffing requirements and having to cancel portions of them. We were really close last year with some programs, which is easily avoidable with your help! Thanks so much again as always and I'll look forward to seeing all the member presentations at the next meeting.

Peace to you—Chris Luzier

GLMSMC Upcoming Elections and Slate of Officers

President- Jonathan Harris

Vice President- Gary Leaman

Secretary- Jeff Cessna

Treasurer- Ben Dodge

Field Trips Coordinator- Dave Fryauff

Membership Chairman- Doug Baum

Downstairs Showchair- Holly McNeil

Upstairs Showchair- Dave Tiktinsky

Property Manager- Joel Rosen

Immediate Past President- Chris Luzier

EFMLS Liaison- Wendell Mohr

Bulletin Editor- Olivia Luzier

Nominations for officers may be made on the floor at the meeting, provided that the nominee has agreed to serve.

GLMSMC Regular Meeting Minutes

October 12th, 2015

The October 12th, 2015 meeting was called to order by President Chris Luzier at 7:30 pm. This was a bit earlier than usual because this session was a special member auction and needed to get under way as early as possible. There was no speaker and no show table at this meeting. There were approximately 10 tables set up with beautiful and unusual mineral and lapidary offerings and some lapidary equipment as well. The high bid of the evening went for a large, beautifully banded lapidary piece of pink rhodochrosite from Argentina. 100% of the proceeds of the auction went to the member-seller. Proceeds from a few items that were donated to the club. Special thanks to GLMSMC members Dave Tiktinsky, Holly McNeill, Jeff Cessna, Jonathan Harris, Dee Weiss and Chris Luzier for running this auction. Mark Dahlman conducted the youth education program (MOCKS), as usual, in the adjoining classroom.

Approval of September 2015 Meeting Minutes: It was M/S/A to approve the September 14th regular meeting minutes.

GLMSMC Officer Reports: Brief reports were given by those officers who had information to share. Upcoming field trips were announced. President Luzier thanked all members who had stepped forward to fill new officer positions in 2016.

It was M/S/A to adjourn the meeting at 9:45 PM.

Dave Fryauff, Secretary

GLMSMC BOARD MEETING MINUTES

Board Members Present: Doug Baum, Andy Celmer, Dave Fryauff, Jonathan Harris, Chris Luzier, Holly McNeil, Wendell Mohr, Pat Repik-Byrne, Joel Rosen, and Dave Tiktinsky. Gary Leaman was

present as a candidate board member. President Chris Luzier called the meeting to order at 7:32 pm.

New Officers for 2016: The members agreeing to stand for office are Jonathan Harris, President; Gary Leaman, Vice President; Jeff Cessna, Secretary; and someone to be the Treasurer is needed. [Post Script – since the board meeting Benjamin Dodge has agreed to be nominated for Treasurer]. We are very happy to have Olivia Luzier step forward as the Rockhounder editor in 2016. A vote to elect these new officers will occur at the November 9th meeting.

T-Shirts for GLMSMC Members: Colors, designs, logos, styles, and costs were discussed as was including the MSDC club. Chris Luzier will obtain further details on same.

Electronic Record of Past Rockhounder Issues: Chris Luzier mentioned that Jeff Nagy is interested in scanning past issues of the Rockhounder and posting on the web site for easy access.

Need for 300 Preforms for the 2016 Show: There was discussion as to GLMSMC members who have the equipment and interest in taking this on. It had been previously agreed by the Board to pay any members willing to do so \$1 per preform. There was discussion of obtaining either as a donation, or purchase, granite and/or marble floor tiles from a local business.

Replacement of Trailer for Show Supplies & Materials: Joel Rosen has been researching the cost of replacing our current 22' x 8' trailer. Our current trailer is 27 years old and has problems with leakage and rust. It would be ideal to have a ramp on the next trailer we buy. There was some discussion as to whether this purchase could be tax exempt, owing to our status as a 501 c3 nonprofit organization. Holly will provide our tax ID number and a document verifying our tax exempt status to Joel for this trailer purchase of est. \$8800. It was advised that Joel obtain 3 separate estimates for different trailers to present for BOD discussion. There was a question of possible trade-in value for the old trailer. The possibility of setting aside some funds each year into an 'escrow' type reserve for the purpose of this purchase was discussed.

Treasurer's Report: Holly reported that Tom Parnell, who performed the GLMSMC audit of financial records in 2014, returned the records and is expected to produce his final report in about 2 weeks. Holly reported on the status of projected year-end financials. Holly also asked the group to provide any budget requests so the budget could be reviewed at the November Board meeting. The fiscal year will end on December 31st, 2015.

Preparations for GLMSMC Gem & Mineral Show, March 19th & 20th, 2016: Holly indicated the need to obtain more cloth bags, poly bags, pyrite nuggets, and fossil sharks teeth for the junior section at the show. It was M/S/A to authorize a disbursement of \$400 out of the Lillian Turner funds to purchase sufficient supplies to cover junior exhibit needs in 2016 with some additional purchases for the 2017 show. Doug Baum made fliers for the 2016 show and gave an est. 500 to Dave Fryauff for handout at the upcoming NOVA Mineral show at GMU on November 21st & 22nd. It was requested that BOD members have access to a PDF version of the flier to send out widely to various other clubs and contacts. Chris Luzier asked for fliers to hand out at the Ultraviolation Show in PA this weekend (24 & 25 October). Wendell Mohr advised that other local EFLMS groups (Baltimore, Annapolis, DC, and VA) be invited as exhibitors in our 2016 show. Pat Repik-Byrne reported that she made a draft document of duties, needs, and procedures for the Downstairs Show Chairperson and will send this to Holly when completed.

Meeting Attendance & Member Participation: It was suggested that attendance at our regular monthly meeting has been falling off. Membership chairman Doug Baum reported that our current active membership is 109 adults and 23 youth. These numbers will be reported to EFMLS. Kudos to Chris Luzier and others for filling almost all officer positions for 2016. There was a recommendation that members who benefited from tuition to attend the 2015 Wild Acres workshop be requested to write a brief piece for the newsletter or to present a talk at our regular meeting. Photos of the Wild Acres workshop could be obtained from Carolyn Weinberger (BMS, EFMLS, & AFMS).

Monthly Newsletter & Editor: There was discussion of free programs available for assisting editors with templates and designs for composing newsletters (i.e. S.C.R.I.B.E. that Chris receives).

Monthly Meeting Presenters & Honorarium: There was discussion of possible speakers for meetings in 2016 and the dollar amount that could be allocated, particularly in those cases where the speaker travels some distance to present at our meeting.

Upstairs Show Chairman Duties: Dave Tiktinsky volunteered to take on the duty of upstairs show and will be working on getting contracts out to the dealers and following up with those we have not heard back from yet. There is a need to send emails out to large lists of recipients, but such transmissions run the risk of being labeled as spam and the sender's email account being frozen by

the service. It was advised to contact Mark Dahlman, as he has the knowledge and experience to advise others on these matters.

Field Trip Chairman Report: The field trip to the Churchville Quarry on October 24 was limited to 5 members and was filled. The next field trip on November 7th or 8th is to the Cornwall Iron Mine dumps on the grounds of the Iron Valley Golf Course. A field trip is planned for Suffern Acres on November 15th to dig for quartz crystals. There is a digging fee of \$10/person at this site. Thanks to Jonathan Harris for being a great field trip director these past two years and to Dave Fryauff who is coming in as the next field trip chair for 2016.

It was M/S/A to adjourn the meeting at 9:10 PM.

David Fryauff, Secretary

FUTURE ROCKHOUNDERS OF AMERICA (THE MOCKS, AGES 10-15)

Next Meeting Date: November 9, 2015

Meeting Time: 7:45-9:00pm

Meeting Location: Sunroom Cafeteria at the Rockville Senior Center

October 12th Meeting:

FRA members started working on the Special Effects badge. To earn this badge, members are learning more about magnetism, chatoyancy, triboluminescence, birefringence, and other peculiar characteristics of particular rocks.

November 9th Meeting:

At our November meeting we will continue working on the Special Effects badge. We will also be deciding on the FRA badges to earn after this one. Come and help us decide what's next. FRA members, if you have 10 labeled micromounts (requiring magnification to appreciate them), 10 labeled thumbnails (typically in 1" boxes), and/or 10 labeled miniature specimens (in 2" boxes), please bring them to our meeting so you can receive credit toward the World in Miniature badge. See you at our meeting!

For more information on the Future Rockhounds of America program, please contact Mark Dahlman at <fra_advisor@glmsmc.com> or 301-428-0455.

FIELD TRIP NEWS

Jonathan Harris

We have several fieldtrips planned. Here is a summary of our upcoming trips:

- **Sunday, November 8:** Cornwall Dumps, Cornwall, PA
- **Sunday, November 15:** Scufflin Acres, near Prospect, VA (fee dig for quartz crystals)
- **Saturday Jan 9, 2016:** James Madison University Mineral Museum and Laboratory of Lance Kearns.

Cornwall Mine Dump, Cornwall, PA Sunday, November 8, 2015 from 10am-3pm

Please reply by email to jgharris7@gmail.com if you are attending. Please let me know 10 days prior to the trip so I can get Tom a correct headcount.

**Field Trip
Cornwall Tailings
Cornwall, Pa
Sunday, Nov 8, 2015
(10:00 - 3:00)
Delaware Mineralogical Society**

Site Geology

The minerals at Cornwall are associated with two major rock types: diabase and limestone. The Triassic diabase is an igneous rock of dark green to black color containing feldspars and pyroxenes, with minor amounts of biotite, ilmenite and hornblende. The diabase formed by crystallization of these minerals from a molten rock that cut upward through surrounding Cambrian and Ordovician limestone. This diabase, as it cooled and solidified, recrystallized some of the limestone into marble. Several minerals, such as diopside, actinolite, epidote, and garnet, also formed in the limestone partly as a result of the heat from the diabase and partly as a result of the addition of some chemical elements from the final crystallization of the diabase. Later, additional solutions spread outward along the top of the diabase into the limestone. The magnetite, hematite, pyrite, chalcopyrite, actinolite and chlorite formed at this stage. Sometimes they replaced the limestone, and sometimes they replaced the previously formed diopside and actinolite. The zeolites, sulfated, hydroxides, and copper carbonates crystallized last, filling open fractures and cavities. The consequence of this series of geologic events has resulted in certain minerals occurring together.

Three such examples are the associations 1) magnetite-chalcopyrite-actionlite, 2) zeolites-chlorite-magnetite, and 3) garnet-tremolite-calcite-serpentine. The age of the ore deposit is approximately 190 mya, which is within the Triassic period.

MinDat list 75 minerals that have been found at this site.

Collecting

The mines at Cornwall have been closed for some time, and are now imploded and/or flooded. However extensive tailing piles remain and we have been granted permission to collect at one. It is quite large being perhaps 100 X 300 yds roughly a triangular shaped slope. The rocks appear to be mostly diabase; little limestone was evident but I did find some. Virtually all of the rocks are dinner plate sized and smaller.

NOTE: It is about a ¼ mile walk from a parking area to the tailings piles. For the most part it's a very easy walk. This is not necessarily a strenuous collecting trip, depending on how much you collect. The tailings slope is immediately adjacent to a golf course; don't bother the golfers, stay down the slope out of sight. And there are lots of round, dimpled, white 'rocks' scattered throughout the slope...collect them for your favorite golfer.

Equipment:

You will need to bring leather boots (I don't think you need steel-toed), gloves and goggles (hard hat optional). Bring rock hammers, chisels and small sledges (2-5 lb range), wrapping material and flats (I don't think a big sledge is necessary). Also bring lunch, snacks and drinks; there are no food sources nearby (unless the Golf Club restaurant happens to be open)

Bring a compass; watch it go crazy! If you somehow get lost, do not rely on your compass.

This Field Collecting Trip is for Delaware Mineralogical Society members only and members of invited clubs.

Scufflin Acres Quartz Crystal Dig

Sunday November 15, 10am-??

261 Scufflin Acres Ln, Prospect, VA (where Scufflin Acres Ln Meets Simpson Rd (rt 645)

Fee dig for quartz crystals, including amethyst

Fee \$20 full day/\$10 half day (seems like 4-6 hours of digging), children

Drive time, about 3 hours from Rockville/185 miles.

<https://www.facebook.com/Scufflin-Acres-Farm-100676023472061/timeline/>

Please RSVP to jgharris7@gmail.com four days in advance.

Saturday Jan 9, 2015, 9am

James Madison University Department of Geology and Environmental Science and Mineral Museum, hosted by Professor Lance Kearns. The last few trips were so successful we have had requests for another trip!

Professor Kearns is a valued link between hobbyists and professional geologists. How have many of our seasoned collectors identified the rich variety of local minerals? Lance Kearns. For those who like machines more than experts, Professor Kearns has indicated that the X-ray diffraction machine and Ramen Spectrometer will be available. There is some chance that the LEIS/SEM lab (Low Energy Electron Diffraction and Scanning Electron Microscope) will be open. And of course the **JMU** mineral museum.

Please sign up by responding to this email or include "James Madison University" in the subject line. Make tracking signups easier by changing the subject line when sending me emails on other topics! Prior sign-up by January 24, 2015 is required to give Professor Kearns a correct headcount. Please sign up earlier if possible.

Directions:

Travel Time is about 2 hours and 30 minutes from Rockville, MD. Note GPS directions to James Madison may take you a mile or two away from the destination. Memorial Hall is at 395 South High Street, between Grace Street and Martin Luther King Jr. Way (formerly Cantrell Avenue).

1. Go West on I-66 to I-81 South.
2. Get off I-81 at Exit 245.
3. Turn RIGHT onto Port Republic Road
4. Proceed to S. Main St. (Rt. 11) and turn right at the light.
5. Proceed northward on S. Main St. to the 3rd traffic light.
6. Turn left onto Cantrell Ave (or Martin Luther King Jr. Way).
7. Proceed over the bridge to traffic light on South High St. (Rt. 42). Memorial Hall (the old Harrisonburg High School) is directly in front of you.

8. Go straight into the parking lot. The Mineral Museum is around the building to the left (south side) along Grace Street. Entrance “E” to the building.
9. After entering the building at Entrance “E”, make an immediate right. The museum is at the end of the hall.

TO THE WAY BACK MACHINE— MINERAL JAMES L MACIE

Andy B. Celmer, EFMLS Historian

Hello Seekers,

Mineral collecting in the colonies that would soon become these United States of America is getting off to a very slow start. There is no aristocratic leisure class to begin collections or fund the sciences. Now of course, we have a ruling class of wealthy individuals that dictate policy using the best politicians money can buy. But I digress. There are no scientific societies or literature about minerals and collecting. Finally, I don't know what the rest of the east coast has to offer, but Maryland minerals are not very impressive.

Individual collectors are scattered from Georgia to Maine but the dominant center of mineral collecting is Philadelphia's medical community. Medical people are trained in the use of minerals in their practice and natural history in general. While the collectors are becoming more sophisticated, the general public views the rockhounds as nuts, that's a legal term. An example is Thomas Cooper of Philadelphia who in 1811 is collecting along the Susquehanna River, when the local residents bring him up on a charge of lunacy. Be careful out there boys and girls!

Thomas Barton (1730-1780) is an Englishman, born in Ireland. He sails to Philadelphia to take the position of tutor at the Philadelphia Academy of Natural Science, later to become the University of Pennsylvania. He is deeply interested in science and mineralogy and builds a mineral collection, which is inherited by his son, Benjamin Smith Barton (1766-1815). Ben adds to the collection, which ends up at the Philadelphia Academy of Natural Science, where it still resides. Unfortunately the provenance of specific specimens cannot be assured.

Thomas Jefferson (1743-1826) attends William and Mary College at 16 and develops a keen interest in mathematics and natural science. He will become fluent in French, Greek, Latin, Spanish,

Italian and Anglo-Saxon, primary author of the Declaration of Independence, third president of these United States and a fossil and mineral collector. He has a small museum at his home, Monticello, along with a number of mineralogical works in his library. He enjoys geological field work but only as it applies to practical manufacturing and considers the study of chemistry a waste of time. Tom objects to the uncertainty and utility of geology as a useful science. Did I mention he was a lawyer? And yet he includes mineralogy in the curriculum of the University of Virginia even though there are few proper study collections in the United States. Imagine taking a class in mineralogy without minerals to test and examine. I had plenty of minerals in my class and still had to repeat the course! I can't help thinking of the many things Jefferson and I have in common. I am fluent in language, have a mineral collection and my house has a name, The Love Shack!

Charles Willson Peale (1741-1827) born in Maryland, "The Land of Pleasant Living," started out as a saddler but soon took up the study of portraiture. He serves in the Revolution and occasionally paints portraits and landscapes during the war, which will become historical treasures. He opens a museum of natural history in his house in Philadelphia, striving to bring to his museum the world in miniature that is purposeful and coherent. The museum moves to the Old State House around 1810 where it continues to be popular with the public and persons of science. The "Long Room" is 100 feet in length filled with portraits, stuffed animals and cases of minerals. The 8,000 mineral and fossil specimens include Derbyshire minerals donated by Benjamin Franklin, minerals and ores from the Lewis and Clark Expedition donated by Thomas Jefferson, European minerals from Abbe Hauy, Maine minerals from William Maclure and thousands more. Eventually everyone in this country knew of this museum.

Adam Seybert (1773 - 1825) is the leading authority in mineralogy in Philadelphia with an extensive collection of American minerals. He stressed recording the locations of minerals, stating, "Experience has taught me the utility of the present record of localities, for the places whence the specimens were brought are soon forgotten and thus the utility of them in great measure is lost." I believe we have all learned that lesson the hard way; maybe that is the only way to learn that particular lesson. He sells his 2,000 specimen collection to the Philadelphia Academy of Natural Sciences, where they still reside. If you are paying attention, (who am I kidding?), you will recall it is now called the University of Pennsylvania.

George Gibbs (1776 – 1833), not to be confused with Barry, Robin and Maurice Gibb of the Bee Gees, is the wealthy son of a merchant. Born in Newport, Rhode Island, (all the ports in the US are new ports), he travels to China and decides to return home by way of Europe. He meets Count Gregorii Razumovsky (1759 – 1837) of Russia, the good Count is headed back to Russia and does not want to take his extensive collection of Russian minerals with him. How many of you travel with your rock collection? As George Carlin said, “Your stuff wants to go on vacation too!” George Gibbs, not George Carlin, (I wonder if they are related?), buys the Count’s collection and because he still has money, he amasses 6,000 specimens. By this time he learns that the great collection of Jean Gigot d’Orcy (1733-1793) is for sale and, (you guessed it!), he still isn’t out of money! He now has an additional 4,000 excellent specimens and is introduced to a number of prominent collectors, through which he establishes lasting friendships and more specimens. Let us step back and take stock. George Gibb leaves for China in 1796, it is now 1805, George is still on the road and while he is not out of money, his acquisitions have become so large as to limit his movements. What’s a rich guy to do? He has them crated up, goes back to Newport, Rhode Island, puts them in storage and goes back to Europe, ‘cause he is not done shopping!

Benjamin Silliman a professor at Yale, persuades George’s sister to let him open a few crates and he likes what he sees! Upon his return, George agrees to put some of his collection on display at Yale and despite the War of 1812 a 10,000 specimen collection opens at Yale. The George Gibbs collection is considered the best collection in the country. He sells his 20,000 specimen collection to Yale by and by and while the collection can still be viewed there, most individual specimens can no longer be identified.

Well that is more than enough for me. And to think when I started this article I didn’t think I had much to say. So as Red Green says, “If the women don’t find you handsome, they should at least find you handy!” This is Handy Andy B.

WEBSITES OF INTEREST

Wendell Mohr



Aerial Photo Credit: Wikipedia Photo

The Barringer Meteorite Crater is a family owned enterprise in Arizona near Flagstaff. Crater history tells of the meteorite, the crater, controversy and resolution. A 9 minute slide show, “Weighing the Evidence” and the links under Science Education are worthwhile.

www.barringercrater.com

Visiting the Crater? Start at MeteorCrater.com.



Photo Credit: Roger Weller Cochise College

From Brazil to China: The Journey of Rubellite Tourmaline

This site is a follow-up to the GIA article on gem mines in Brazil. A 7’39” video “Cutting in China” featuring author Andrew Lucas, tells of the operation involving rubellite and bi-colored tourmaline from the Cruzeiro Brazil mine. The commercial path includes The Miranda cutting group which entered into a joint venture with KGK, a global diamond, colored stone, and jewelry wholesaler for sales. There is an interesting sequence of beryl, radiation-treated to become golden brown, then

heat treated to yield a finished pink morganite stones. You never know what has occurred to purchased stones! The 7' 14" video, Interview with Miranda Costa was of less interest to me.

<http://www.gia.edu/gia-news-research-miranda-journey-of-rubellite-tourmaline>



Production level in the Ray porphyry copper mine AZ—USGS Photograph

Top United States Geological Survey Frequently Asked Questions (FAQ) for 2014 consists of wide ranging answers to questions you always wanted answered! In fact there are some 2015 updates added. With over 1400 pages this could keep you reading all year. I suggest that you select areas of interest you find in the headings and go from there. Have fun!

http://www.usgs.gov/blogs/features/usgs_top_story/have-you-ever-wondered-top-usgs-faqs-for-2014/

OTHER ITEMS OF INTEREST

Wendell Mohr

Making North America TV Series

The programs explore how the continent was shaped—and how it shaped us. Watch the NOVA series on PBS: WETA or MPT.

November 4: *Making North America*—Origins,

November 11: *Making North America*—Life

November 18: *Making North America*—Human

See <<http://www.pbs.org/wgbh/nova/earth/making-north-america.html#north-america-origins>> for a preview clip of the first show.

Host: Dr. Kirk Johnson, Director of the National Museum of Natural History.

Program Description: Mighty, elemental forces molded North America—fiery eruptions, titanic floods, the grinding of great ice sheets, and massive impacts from space all shaped our homeland. The epic three-part series unfolds in a forgotten world that existed long before our own, crossed by long-lost mountain ranges, deserts the size of Africa, and vast inland seas spanning the length of the continent. Explore beloved landmarks like the Grand Canyon and Yellowstone National Park from the inside out as we witness the clash of nature’s creative and destructive forces. Hosted by renowned paleontologist Kirk Johnson, this spectacular road trip through a tumultuous deep past explores three fundamental questions: How was the continent built? How did life evolve here? And how has the continent shaped us? “Making North America” reveals the incredible story of a majestic continent.

If you miss a program it is customary to appear on NOVA as a computer download after the first presentation.



Gems & Crystals from One of the World's Great Collections

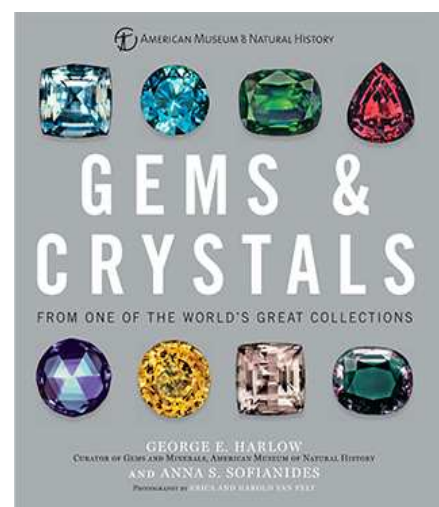
Hardback book: 215 pages

Publisher: Sterling Signature

Published: New York, October 20, 2015

SKU: 9781454917113

\$27.95



This sumptuously redesigned, twenty-fifth anniversary edition of the book features the properties, origins, history, and lore of nearly 150 gems and crystals. The spectacular accompanying photographs showcase specimens, jewelry, and other objects from one of the world's greatest gem and crystal collections.

About the Authors:

George E. Harlow PhD, Curator, Department of Earth and Planetary Sciences at the American Museum of Natural History, is an eminent mineralogist and crystallographer. While interested in a broad range of geologic topics, he specializes in the study of rock-forming minerals, and has recently carried out research on the jadeite variety of jade, examining the source in Guatemala and the provenance of jade for New-World jade artifacts.

Anna S. Sofianides has a master's degree in geo-chemistry and geology and is an alumna of the Gemological Institute of America. Now retired, she worked for 23 years in the Department of Mineral Sciences at the American Museum of Natural History. A tireless researcher, Ms. Sofianides has been collecting data on gemstones and the Museum's collection since 1974.

Photography By: Erica and Harold Van Pelt., who are recognized among the top photographers of gems and gemstones in the world. Their work has appeared in *Lapidary Journal*, *Gems and Gemology*, *Rock and Gem*, and *Mineralogical Record*.

Interested? Order from < <http://shop.amnh.org/a701/shop-by-category/books/adult-books.html>>.

EXHIBIT TO SEE

The University Museums at the University of Delaware features an exhibition of the Irene du Pont Collection from September 9 through December 11th in the Mineralogical Museum in Penny Hall, 255 Academy St., Newark, DE 19716.

Hours

Wednesday: Noon-8pm, Thursday through Sunday: Noon-5pm. Closed during university breaks and holidays.

Irene du Pont (1876-1963) began collecting minerals early in his life and purchased many other specimens. The research of Curator Sharon Fitzgerald, recently published as a Mineralogical Record supplement (May/June 2015), has greatly enhanced knowledge about the specimens and their provenance.

Although the Mineralogical Museum was founded with the gift of the collection of du Pont, Sr., it has grown to encompass specimens gifted or made possible by many generous donors. With approximately 350 specimens on view from a collection of more than 2500 specimens, frequent change allows the visitor to see new specimens. This is particularly true with this fall exhibition. The display cabinets with fiber optic lighting provide accurate color balance for specimens from the wire silvers to the vivid orange wulfenites.

The fall exhibition includes a topaz "boulder", a rutiled quartz, and two Arkansas diamonds. Admission is free and open to the public. For general information, call (302) 831-8037 or visit <<http://sites.udel.edu/museums/>>.

EVENTS OF INTEREST

- **Friends of Mineralogy Symposium (Nov 7) & Field Trip (Nov 8):** Sat, Nov 7 & Sun Nov 8. Lancaster, PA. See announcement.
- **24th Annual Richmond Gem & Minerals Society Rock Sale & Swap:** Sat Nov 14th, 2015 9:00 am – 3:00 pm. Ridge Baptist Church Meeting Hall, 1515 East Ridge Road, Richmond VA 23229. See full announcement below.
- **Audubon Society Tall Ships and Dinosaurs Geology Hike:** Sat Nov 21 1-5 PM. See Audubon Society program lists below.
- **Audubon Society Geology of Huntley Meadows Hike:** Sun Dec 6, 1-4 PM. See Audubon Society program lists below
- **Northern Virginia Mineral Club, Inc. 24th Annual Gem, Mineral, and Fossil Show:** Sat, Nov 21 & Sun Nov 22. Sat. 10am-6pm, Sun 10am-4pm. Fairfax, VA. Hub Ballroom, George Mason University Campus. See detailed coupon below.

Audubon Naturalist Society Programs: New online registration for all programs below.

Visit <www.ANShome.org/adultnatureprograms> and click on "Register Online"
Questions? Call Pam at [301 652 9188 extension 16](tel:3016529188) or e-mail <pamoves@anshome.org>

Tall Ships and Dinosaurs Geology Hike: Saturday, November 21 (1-5 pm)

Leader: Joe Marx

Members \$24; nonmembers \$34

Due to a paucity of rocks, we tend to avoid the Coastal Plain for our Geology forays. Nevertheless, many interesting, non-rocky sites lie close at hand. We'll visit three of them on a 40-mile auto circuit through northwestern Prince Georges County. Our starting point: Bladensburg Waterfront Park, where we will consider how a deep-water port prominent in the War of 1812 has so completely faded from commerce. Next we'll travel to Watkins Regional Park to examine the Atlantic's sandy floor of 60 million years ago. Our last stop visits Dinosaur Park, near Laurel, where paleontologists have unearthed the 110-million-year old bones of several kinds of dinosaurs and mammals. We'll return to Bladensburg to complete the loop. Our walking over paved or gravelly paths will be in generally flat terrain.

Geology of Huntley Meadows: Sunday, December 6 (1-4 pm)

Leader: Joe Marx

Members \$24; nonmembers \$34

Huntley Meadows is a large nature preserve located in Fairfax County not far from Mount Vernon. The preserve is situated in Hybla Valley, a wide swath of flat, low-lying land that was carved by an ancient meander of the Potomac. Huntley Meadows is an excellent site for examining the geologic materials and processes that built our Atlantic Coastal Plain. We will start at an overlook with a view across the whole of Hybla Valley and then drive around the preserve to its headquarters. From the main parking area, we will walk a two-mile loop on easy trails that include a lengthy section of boardwalk across open and sunny marshland. *Note: our pace on this walk will be faster than our usual naturalists shuffle.*

Comets and Meteors— and Their Influence on the Natural History of Earth

Leader: Marla Moore

Thursdays (7:30-9:30 pm)

A: Jan. 28, 2016; B: Feb. 25, 2016; C: Mar. 17, 2016.

It is **free**, but registration required for each session. Explore the science of comets and meteors with retired NASA scientist, Marla Moore. Her first talk will cover facts about comets, and look at the historical perceptions of comet appearances. There will also be a chance to make an icy comet nuclei in class. Our second session will cover meteors, recent and past impact events, and a summary of what meteors are made of and where they come from. Lecture three will look at how comets and meteors have changed the Earth's environment since its origin. These presentations will be gauged for non-scientists.

Friends of Mineralogy Symposium and Field Trip

The Friends of Mineralogy–Pennsylvania Chapter will hold their 2015 Symposium and field trip on the first weekend in November. Mineral collectors in attendance on Saturday will meet in the Hackman Physical Sciences Building at Franklin & Marshall College, Lancaster, PA, to hear five talks by experts on minerals, geology and mining in Pennsylvania and beyond. On Sunday, a field trip for those registered for the symposium will provide an opportunity for mineral collecting.

The program planned for the symposium includes these presentations:

Michael Stefanic, PG: Phosphate Minerals in Pennsylvania

Bill Stephens, PG: Preliminary Evaluation of the Mount Pleasant Mills Wavellite Occurrence

Ron Sloto, PG: The Geology and Mineralogy of the Grace Mine

Ian Saginor, PhD: Volcanic Evolution of Central America

Stan Mertzman, PhD: Mineralogy of the Surface of Mars

All interested mineral collectors are invited to register and attend. As usual, select mineral dealers will be present, and there will be a silent auction, give-away table, refreshments, and plenty of opportunities for visiting with fellow enthusiasts. Lunch is available at restaurants within walking distance. Please see the website <http://www.rasloto.com/FM/> for details, updates, and the registration form.

The mineral collecting field trip on Sunday is planned for a location where a variety of minerals may be available. Details will be given at the symposium. The trip is open only to symposium registrants. Safety equipment will be required.

Dates: Saturday & Sunday, November 7-8, 2015

Location: Saturday Nov. 7 at Hackman Physical Sciences Bld., F&M College, Lancaster, PA

Sunday, Nov. 8: location to be announced

Registration: \$25 for non-members, \$15 for current FM-Pa members; free for students with student ID

Please register in advance; a form is available on the web site.

Web Site: <http://www.rasloto.com/FM/>

Contact: Joe Marchesani

E-mail: Jmarch06@comcast.net

Phone: 609-433-5129

Fall Montgomery County Recreation and Parks Programs

Gemology I Introductory

Ages 18 & Up. Want to know those gems you are wearing on your rings, necklaces, bracelets, brooches? Curious about how gemstones came to be? Beginning Gemology, organized around Moh's scale of hardness, is an introduction to gemstone study. Hands-on specimens and examples to examine during each class.

11 Sessions, \$100. Instructor: Our Member, Tim Morgan. At Potomac Community Center, 11315 Falls Road, Potomac MD 20854 Class Number 5820. Starts October 1 Thursdays 10:00 am – 11:15 am.

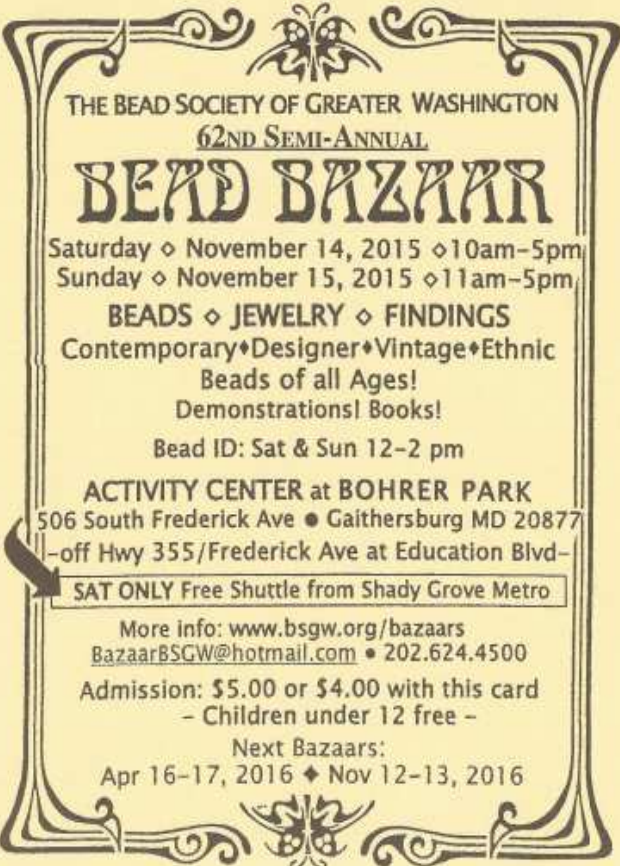
Gemology II Advanced

Ages 18 & Up. Prerequisite – Beginner or Introductory class. Interested in Gemstones, but already know a little something about them? Want to learn more? This class examines gemstone groups with examples and hands-on specimens. Guest speaker and field trip possible.


11 Sessions, \$100. Instructor: Our Member, Tim Morgan. At Potomac Community Center, 11315 Falls Road, Potomac MD 20854 Class Number 5858. Starts September 30 Wednesdays 10:00 am – 12:15 am.

Register online at www.ActiveMONTGOMERY.org or obtain a copy of the Montgomery County GUIDE - Fall Recreation and Parks Programs booklet at a public library, use the registration form on the inside back cover, and mail in as directed.

SHOW ANNOUNCEMENTS



THE BEAD SOCIETY OF GREATER WASHINGTON
62ND SEMI-ANNUAL
BEAD BAZAAR
 Saturday ◊ November 14, 2015 ◊ 10am-5pm
 Sunday ◊ November 15, 2015 ◊ 11am-5pm
BEADS ◊ JEWELRY ◊ FINDINGS
 Contemporary ◊ Designer ◊ Vintage ◊ Ethnic
 Beads of all Ages!
 Demonstrations! Books!
 Bead ID: Sat & Sun 12-2 pm
ACTIVITY CENTER at BOHRER PARK
 506 South Frederick Ave • Gaithersburg MD 20877
 -off Hwy 355/Frederick Ave at Education Blvd-
SAT ONLY Free Shuttle from Shady Grove Metro
 More info: www.bsgw.org/bazaars
BazaarBSGW@hotmail.com • 202.624.4500
 Admission: \$5.00 or \$4.00 with this card
 - Children under 12 free -
 Next Bazaars:
 Apr 16-17, 2016 ◊ Nov 12-13, 2016



24th Annual
GEM, MINERAL
AND FOSSIL SHOW

Presented by The Northern Virginia Club, Inc. www.novamineralclub.org
 Sponsored by the Dept. of Atmospheric, Oceanic and Earth Sciences at GMU

Date: November 21 & 22, 2015
 Place: The Hub Ballroom (Student Union II Bldg)
 George Mason University Campus
 Braddock Rd. & Route 123, Fairfax, VA
 Hours: Saturday 10am-6pm, Sunday 10am-4pm
 Admission: Adults: \$6, Seniors: \$4, Teens (13-17): \$3
 Children 12 & under, Scouts in uniform,
 and GMU Students w/valid ID are FREE.

\$1 OFF
 1 Adult admission
 with this card
 (applies to all adults
 + seniors in your
 group)

Demonstrations, Exhibits, and Door Prizes. Mini-mines for
 children to dig in and get free fossils and minerals.
 Over 20 Dealers with Fossils, Minerals, Crystals and Gems for sale.

*Use Parking lot A, enter Lot A from Nottaway River Lane.
 Look for our Courtesy Shuttle to Mineral Show*



SYMPOSIUM & FIELD TRIP

Friends of Mineralogy - PA Chapter November 7-8, 2015 Lancaster, PA

Hackman Physical Sciences Building (parking lot off Harrisburg Pike), Franklin & Marshall College

Symposium for mineral enthusiasts on **Saturday Nov. 7** Doors open at 8:30 a.m.

Sales by Select Dealers – Silent Auction – Give-away Table – Meet Fellow Collectors

Experts will speak on the theme: **Recent Advances in Mineralogy: Pennsylvania and Universal Applications**

Michael Stefanic, PG PA DEP Phosphate Minerals in Pennsylvania	Bill Stephens, PG Stephens Environmental Consulting, Inc. Preliminary Evaluation of the Mount Pleasant Mills Wavellite Occurrence	Ron Sloto, PG West Chester Univ. The Geology and Mineralogy of the Grace Mine	Ian Saginor, PhD Keystone College Volcanic Evolution of Central America	Stan Mertzman, PhD Franklin & Marshall College Mineralogy of the Surface of Mars
--	--	--	---	---

Registration (form on web site): Current members \$ 15.00 Non-members \$ 25.00 Students with student ID free

Professional Geologists: lecture attendance qualifies for Professional Development Hours toward license renewal

Field Trip Location to be announced. **Sunday Nov. 8** Open only to symposium registrants.

Visit our web site for details, registration form, changes and updates: www.rasloto.com/FM

**The 24th Annual Richmond Gem & Minerals Society Rock Sale & Swap
Saturday November 14th, 2015 9:00 am – 3:00 pm.**

Free Admission. Plenty of Parking.

Ridge Baptist Church Meeting Hall, 1515 East Ridge Road, Richmond VA 23229

The Rock Swap is indoors, so come rain or shine.

Open to all children and adults (from novice to expert) to swap or purchase various mineral, gem, fossil, shell, and lapidary specimens. Free items for kids and a raffle!

The Ridge Baptist Church and Meeting Hall are 400 feet on the right, across from Kroger's Grocery.

Meeting Hall is the white building at the rear of the parking lot.

More information at: <<http://rgms-va.info/rockswap.html>

With this ad, \$1.00 off General Admission

2015

GEM MINER'S HOLIDAY!!
November 21-22, 2015
LEBANON, PA
Beads! Findings!
Minerals! Fossils!
Gems & Jewelry!

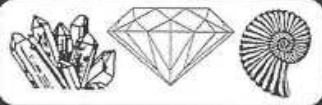
THE MID-ATLANTIC'S BEST SHOW

GIFT AND CRAFT RELATED ITEMS
RETAIL AND WHOLESALE EXHIBITORS
HOURLY DOOR PRIZES & GRAND PRIZE DRAWINGS
OPEN TO THE PUBLIC

SATURDAY: 10 A.M. - 5 P.M. ❖ SUNDAY: 11 A.M. - 4 P.M.
\$5 ADMISSION - CHILDREN UNDER 12 FREE

Lebanon Expo Center: Route 72
5 mi. N. of PA Turnpike--Exit 266 (old exit 20),
right on Rocherty Road.
www.gem-show.com
(see website for updates)
(301) 807-9745





24th Annual GEM, MINERAL AND FOSSIL SHOW

Presented by The Northern Virginia Club, Inc.

www.novamineralclub.org

Sponsored by the Dept. of Atmospheric, Oceanic and Earth Sciences at GMU

Date: November 21 & 22, 2015

Place: The Hub Ballroom (Student Union II Bldg)
George Mason University Campus
Braddock Rd. & Route 123, Fairfax, VA

Hours: Saturday 10am-6pm, Sunday 10am-4pm

Admission: Adults: \$6, Seniors: \$4, Teens (13-17): \$3
Children 12 & under, Scouts in uniform,
and GMU Students w/valid ID are FREE.

\$1 OFF

1 Adult admission
with this card
(applies to all adults
+ seniors in your
group)

Demonstrations, Exhibits, and Door Prizes. Mini-mines for
children to dig in and get free fossils and minerals.
Over 20 Dealers with Fossils, Minerals, Crystals and Gems for sale.

Use Parking lot A, enter Lot A from Nottaway River Lane.
Look for our Courtesy Shuttle to Mineral Show

MINERALS, FOSSILS, BEADS & JEWELRY SHOW & SALE

HOLIDAY INN HOTEL

9615 Deereco Rd.
LUTHERVILLE - TIMONIUM, MD
(I-83, Exit 17, Padonia Rd.)

ONE DAY ONLY!

SATURDAY, DECEMBER 19, 2015


10:00 a.m. - 4:30 p.m.

Super dealers:

Mike's Minerals,
Highland Rock & Fossil,
The Bead Warehouse (www.thebeadwarehouse.com),
Alan's Quality Minerals

**** FREE ADMISSION ****

For more info, call Mike at 330-398-7015



Show Theme: *Where in the World?* Ticket can be Duplicated
 Presents their **53rd**
Gem, Mineral & Fossil Show
 Delaware Technical & Community College
 400 Churchmans Road (Rt 58)
 Newark, (Stanton), DE @ Exit 4B, I-95
March 5-6, 2016
 Saturday 10:00 am - 6:00 pm
 Sunday 11:00 am - 5:00 pm

An Educational Experience
 For the Entire Family
 Outstanding Minerals & Fossil Dealers
 Gem, Jewelry & Lapidary Supplies
 Demonstrations, Exhibits & Door Prizes
 Jr. Booth for Kids
 Adults: \$6.00 (\$1.00 off with this coupon)
 Seniors: \$5.00
 Juniors (age 12-16): \$4.00
 FREE to Children and all Scouts in Uniform
 Additional Information @ www.delminociety.net

† TAX FREE SHOPPING †

If you are planning a trip and want to know what clubs you might be able to visit, it would be worthwhile to visit the American Federation of Mineralogical Societies website. Check out their newsletter archives at <http://www.amfed.org/news/default.htm>.



BOARD OF DIRECTORS

President – Chris Luzier, 847 Springdale Drive, Millersville, MD 21108-1436, 443-995-5363

Vice President – Dave Tiktinsky, 9209 Laurel Oak Drive, Bethesda MD 20817-1937, 301-365-2812

Secretary – Dave Fryauff, 24109 Sugar Cane Lane, Laytonsville MD 20882-4031, 301-253-1687

Treasurer – Holly McNeil, 22 South Duke Street, Rockville, MD, 20850-1014, 301- 605-7179

Junior Advisor–Vacant

Field Trip Chairman – Jonathan Harris, 11932 Goya Drive, Potomac, MD 20854-3313, 301-545-0808

Membership Chairman – Doug Baum, 11205 Golden Meadow Ct., Germantown, MD 20876-1740, 301-515-4641

Show Co-Chairperson – Pat Repik-Byrne, 9 Starlight Court, Potomac, MD 20854-2658, 301-279-5962

Property Manager – Joel Rosen, 833 Rampart Way, Union Bridge, MD 21791-9325, 410-775-7937

Immediate Past President – Andy Celmer, 4798 Mid County Court, Monrovia, MD 21770-9417, 301-305-0229

EFMLS Liaison – Wendell Mohr, 9509 Emory Grove Road, Gaithersburg, MD 20877-3501, 301-926-7190

Bulletin Editor– In Transition

Life Members: Larry Harrison, Wendell Mohr, Juan Proaño, and George Durland.

Society Address: Gem, Lapidary, and Mineral Society of Montgomery County MD., Inc.

P. O. Box 444, Gaithersburg MD 20884-0444; Web Site: <http://www.glmsmc.com/>

All Society correspondence is to be sent to this address except that which is intended for *The Rockhounder* and its editor. Such items are to be sent to the editor's email address –

BulletinEditor@glmsmc.com

Permission to copy material printed herein, except specifically copyrighted items, is granted, provided credit is given.

Award Winning Bulletin
EFMLS, AFMS



TIME SENSITIVE
DATED MATERIAL
FIRST CLASS MAIL

THE ROCKHOUNDER
Gem, Lapidary, and Mineral Society
of Montgomery County, MD, Inc.
Kristin Lolmaugh
1282 Terrace Lane
Arnold, MD 21012